



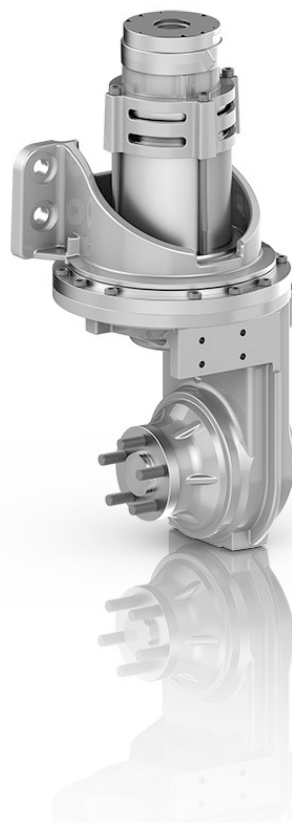
ZF in warehouse equipment and pedestrian controlled vehicles

Besides electrically powered systems for forklifts and GSE, the ZF eTRAC brand also offers drive systems for warehouse equipment and pedestrian controlled vehicles.

This includes lifting working platforms, electric tractors, cleaning vehicles, driverless transport systems and other special applications.

eTRAC GK-Series: Bevel gear drives

- Patented ZF hypoid toothing provides the customer with optimum performance
- High torque capacity in a minimal installation space
- Low reaction torque for hand-held equipment due to optimized axle offset and larger wheel
- Minimum maintenance required thanks to durable transmission components
- Low noise level



Product and performance classes

	Pedestrian controlled vehicles Class III				Warehouse equipment Class II			
	GK10-6	GK10-7	GK10-6 LD	GK10-7 LD	GK16	GK25	GK30	GK40
Max. wheel load [kg] *	1,100				1,650	2,600	3,400	4,200
Acceleration/deceleration torque [Nm] *	+/- 320	+/- 420	+/- 320	+/- 420	+/- 650	+/- 1,400	+/- 1,700	+/- 2,600
Max. wheel torque [Nm] *	+/- 500				**	**	+/- 2,100	**
Max. wheel dimension [mm] *	230x70		254x100		254x125	343x14 0	400x16 0	406x17 8
Ratio	21.96; 27.84	16.64	27.84	21.09	16.6; 24.1	20.19; 22.98	22.50	19.92

* Note: The figures above are only indicative, based on testing and simulative results for typical material handling application.

** Figures on request