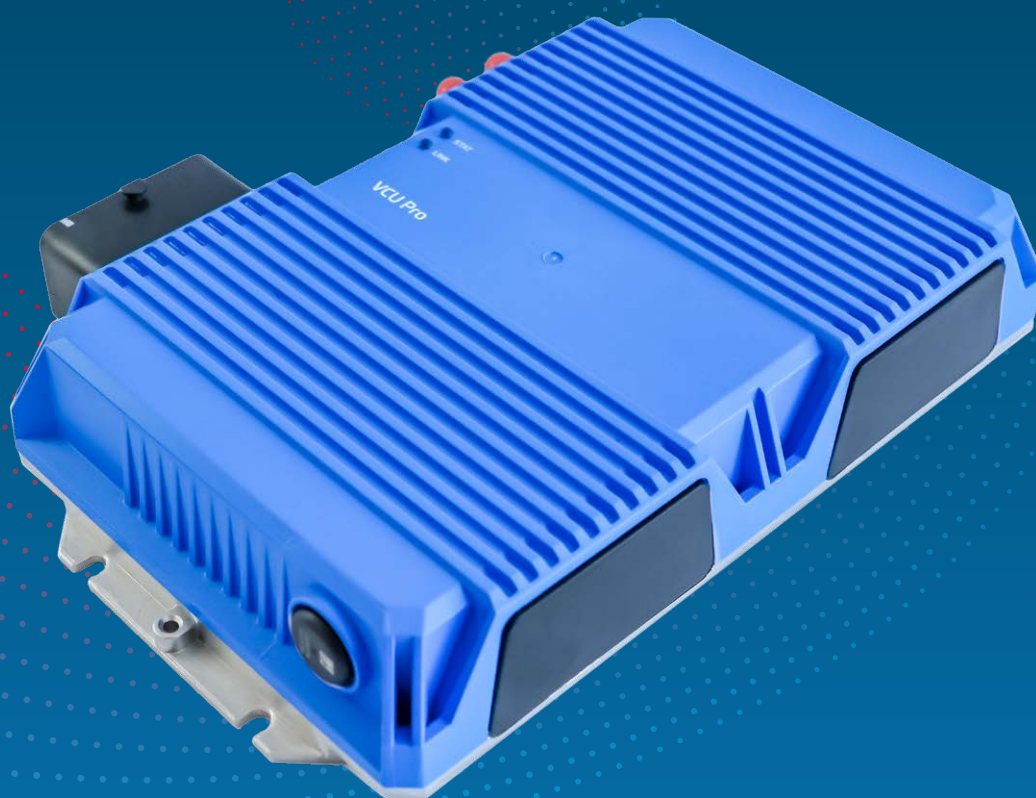


# VCU Pro Onboard Unit Datasheet

Vehicle Connectivity Gateway



**REV 1.05**

0501.338.605



# VCU Pro Onboard Unit

VCU Pro is the advanced on-board unit from the Vehicle Connectivity Unit series. With 4 CAN interfaces (2 standard CAN and 2 CAN FD), 4 analog inputs and 4 digital outputs VCU Pro is a professional and robust vehicle gateway. Two independent processors ensure both a safe and secure connection to the vehicle network and also provide a universal communication capability.



CPU	ARM® 1 GHz
RAM	1 GB
Memory	8 GB Flash
Sensors	3-axis Accelerometer 3-axis Gyro
GNSS	GPS, Glonass, BeiDou, Galileo

Automotive Connector	MOLEX (48 pins)
Antenna Connectors	SMA Female
Mounting Option	Screws

# VCU Pro Onboard Unit

Communication and Interfaces	Processors and modules	Mechanical
2× CAN 2.0B	ARM Cortex A8 (1GHz)	Material: Aluminum / Plastic Waterproof housing
2× CAN FD	Infineon Aurix Microcontroller (200MHz, 472 KB RAM)	Operating temperature from -40°C to +75°C
4× Analog IN	HSM (Hardware Security Module) for cloud communication secure key storage	Protection level: IP5K5
4× Digital OUT	Second HSM for diagnostic key sessions	
1× Ethernet 100 BaseT	GTM (Generic Timer Module)	
2× Ethernet BrdrR		
WiFi 802.11 a/b/g/n		
Bluetooth 4.2		
1× RS232		
1× LIN		
1× K-Line		
1× embedded SIM + 1× plastic SIM (accessible)		
Cellular – LTE Cat4 (EMEA + Asia/Pasific version)		
GNSS	Sensor Network	Memory
uBlox NEO-M8L with Dead Reckoning	3-axis Accelerometer	1 GB RAM
	3-axis Gyro	8 GB eMMC Flash
	Power Supply	Approvals
	Nominal Voltage: 9–36 V DC	E-Mark
		ISO16750
		Fire safety
	System	Certification
	Linux Operating System	CE
	Fail-safe OTA update	FCC (components)

