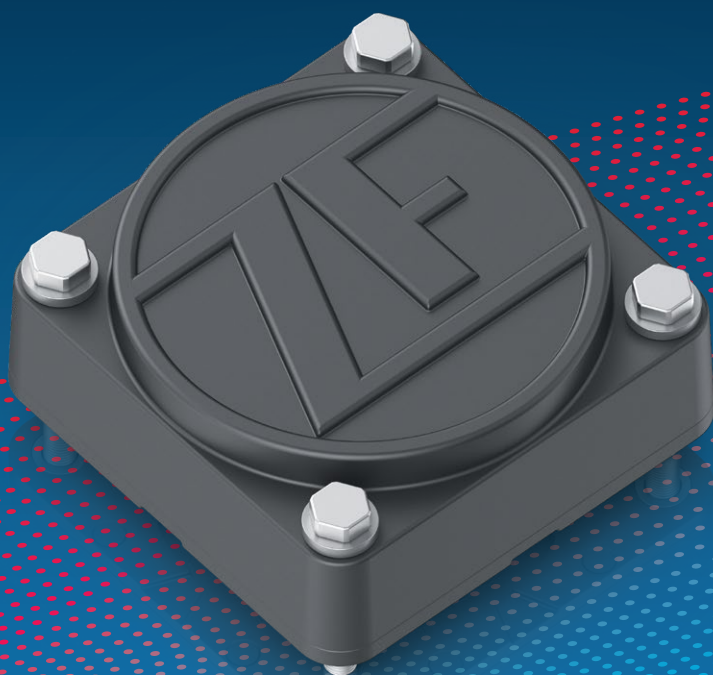


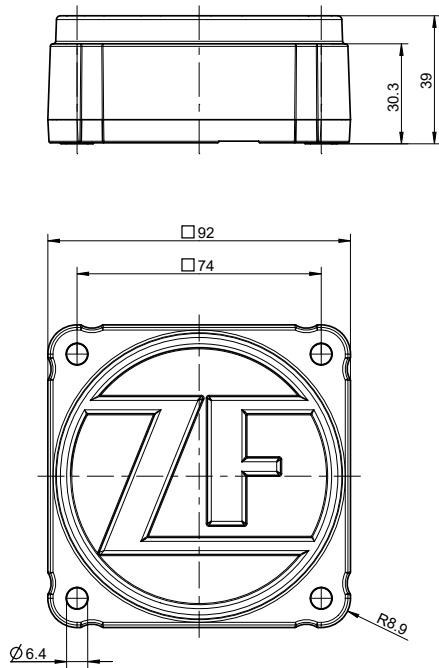


# Heavy Duty TAG

Technical data sheet



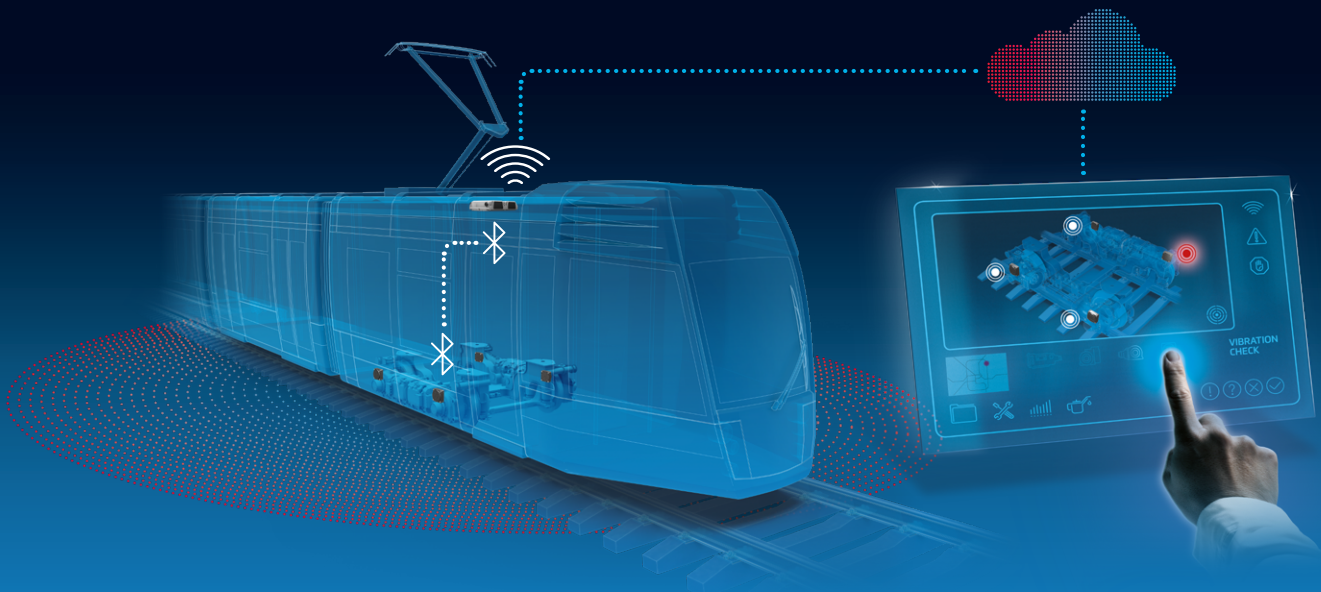
# Keep an Eye on Everything. At any Time.



Values in mm  
Weight: 370 g

## Highlights

- Comprehensive recording of acceleration
- Bluetooth® wireless sensor
- Easy integration into existing systems
- Lifetime up to five years thanks to intelligent energy management
- Designed for industrial use – optimized for use in rail vehicles
- Qualified according to standards of the Rail Industry



## Technical information

Data transfer	<p><b>Bluetooth® Low Energy (2.4 GHz)</b></p> <ul style="list-style-type: none"> <li>▪ Flexible message protocol</li> <li>▪ Secure connection with passkey</li> </ul> <p><b>Sub1GHz (868 MHz) – Hardware ready</b></p>
Scope of functions	<p><b>RTC (Real Time Clock)</b></p> <ul style="list-style-type: none"> <li>▪ Self calibrated</li> </ul> <p><b>Energy management for optimized efficiency</b></p> <ul style="list-style-type: none"> <li>▪ Deep Sleep Mode</li> <li>▪ Power Saving Mode</li> <li>▪ Normal Mode</li> </ul> <p><b>Customized Action Modes</b></p> <ul style="list-style-type: none"> <li>▪ Sample rate with 16bit resolution (1.6 – 6.6 kHz)</li> <li>▪ Measurement duration (up to 16 MB)</li> <li>▪ Filters (anti-aliasing and low-pass)</li> <li>▪ Full-scale acc range (<math>\pm 2/\pm 4/\pm 8/\pm 16</math> g)</li> <li>▪ Axis offsets</li> </ul> <p><b>Inertial Module</b></p> <ul style="list-style-type: none"> <li>▪ 3D digital accelerometer/gyroscope</li> <li>▪ Embedded temperature sensor</li> </ul> <p><b>OTA (Over the Air) update capable</b></p>
Data memory	16 MB (128 Mbit)
Battery	<p><b>Lithium primary</b></p> <ul style="list-style-type: none"> <li>▪ 3x batteries</li> <li>▪ 3.6V 3.5Ah each</li> <li>▪ Not rechargeable</li> </ul>
Compliance	CE WEEE
User interface	Web Portal of ZF

## Environmental conditions

Protection class	IP65 acc. DIN EN 60529
Fire protection	DIN EN 45545
Vibrations and shocks	DIN EN 61373, category 3
Environmental conditions	DIN EN 50155
Operating temperature	-40°C to +70°C acc. DIN EN 50155 Class TX
EMC	DIN EN 50121-3-2

**ZF Friedrichshafen AG**

Industrial Technology  
Marine & Special Driveline Technology  
Ehlersstr. 50  
88046 Friedrichshafen / Germany  
Phone +49 7541 77-3610  
Fax +49 7541 77-903694  
rail@zf.com

For more information:



[www.zf.com/rail](http://www.zf.com/rail)