



ZF Electric Drive Solutions for Compact Vehicles

The ideal contribution for the urban construction site of the future are compact electric vehicles. Quiet and pollution-free operation helps to make construction work in inner-city areas or buildings a reality, despite strict emission controls. Guided by the principle of zero emissions, ZF strives to achieve the ambitious claim of enabling compact work machinery such as compact loaders to also drive emission-free in the future. Technology leader ZF is setting new standards for electrical drives.

eTRAC - Electric central drive solutions

- A 'best in class solution' for power density in electric compact loaders
- The solution is unrivalled on the market in the 20 kW (continuous performance) and 48 V performance classes
- The use of liquid coolant in the traction motor and the power electronics ensures continued performance in all kinds of applications
- Wide range of power classes up to 60 kW and an operating voltage of 650 V
- Axle mount and remote mount available
- Inverter part of scope of supply

MULTITRAC

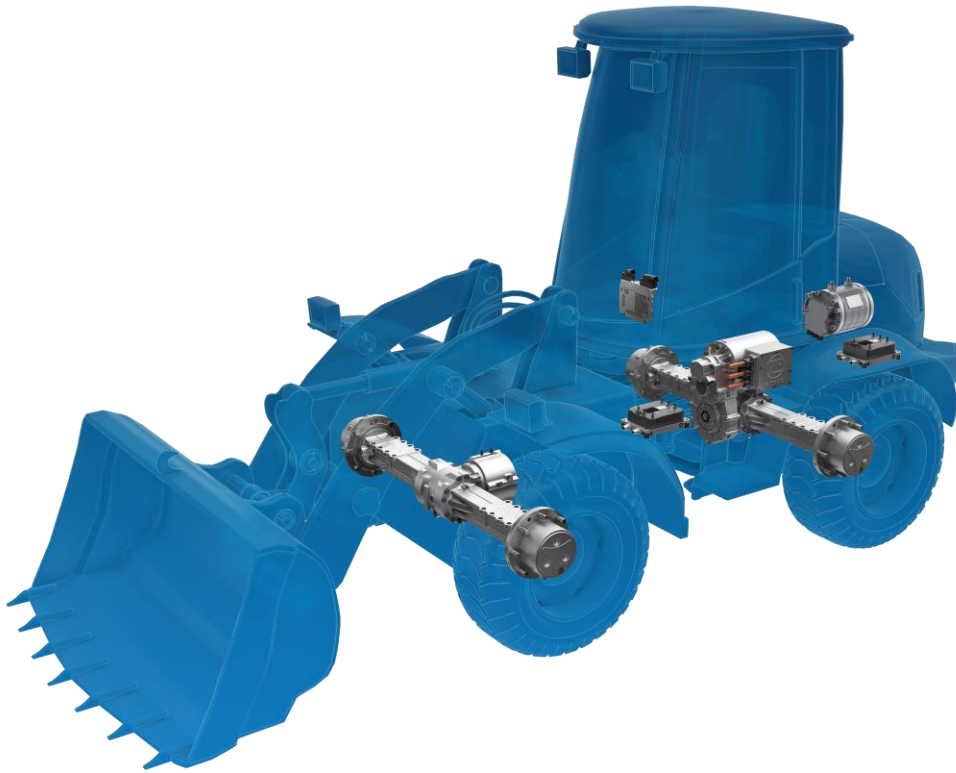
- High efficiency due to avoidance of braking losses and optimized oil supplies
- High ground clearance

Electric power take-off

- Optional e-motor and inverter for working hydraulics



ZF eTRAC electric central drive technology for Compact Wheel Loaders



Product and performance classes

Empty vehicle weight	Front axle	Rear axle	Electric Drive	Voltage	Continuous Power	Max. Power
Class up to 3.9 t Class up to 8,600 lbs	MT-L 3010-II	MT-L 3010-II	eCD20	48 V	20 kW	36 kW
Class up to 4.9 t Class up to 10,800 lbs	MT-L 3015-II	MT-L 3015-II	eCD20	48 V	20 kW	36 kW
Class up to 6.3 t Class up to 13,900 lbs	MT-L 3020-II	MT-L 3020-II	eCD30	96 V	30 kW	54 kW
Class up to 7.2 t Class up to 15,800 lbs	MT-L 3025-II	MT-L 3025-II	eCD40	650 V	42 kW	80 kW
Class up to 10.5 t Class up to 23,150 lbs	MT-L 3045-II	MT-L 3045-II	eCD60	650 V	60 kW	100 kW

11/2023 Technical modifications remain reserved. For installation investigations and for appointments of the definitive implementation, we advise you to order corresponding installation drawings.