

# connect@rail At a Glance



- + Digital monitoring of assets, fleets and infrastructure
- + Predictive and condition-based maintenance planning
- + Easy integration and retrofitting in all rail vehicles
- + Customized modular solutions
- + Eco System partnerships
- + ZF competence

**ZF Group**  
Industrial Technology  
Marine & Special Driveline Technology  
Ehlersstr. 50  
88046 Friedrichshafen / Germany  
Phone +49 7541 77-3610  
rail@zf.com

For more information:



[www.zf.com/connect-at-rail](http://www.zf.com/connect-at-rail)



## connect@rail

Digital condition  
monitoring platform



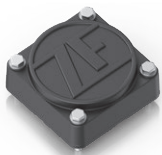
## Keeping an Eye on Everything. At any Time.

connect@rail combines digital know-how and intelligent connectivity solutions for rail transport.

With our innovative solutions, monitoring systems, and digital services, we support rail operators in permanent monitoring, early maintenance planning and predictive maintenance of their fleets. Thus, efficiency, reliability and safety in rail transportation can be further increased using integrated sensors and advanced data analysis tools.



**VCU Pro Onboard Unit**  
Telematics gateway



**Heavy Duty TAG**  
Wireless sensor



**Smart Typeplate**  
Digital typeplate

## Smart. Thorough. Digital.

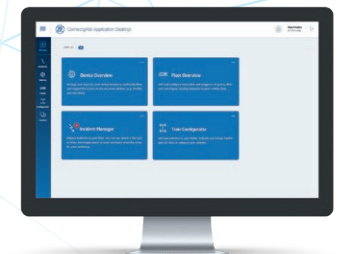
With connect@rail, ZF leverages its extensive expertise as a leading global company for driveline, chassis, and safety technology. The system is a comprehensive and modular approach to fleet maintenance management and condition monitoring.

## Eco System

In order to tailor the digital platform to customer requirements, ZF systematically and strategically expands partnerships with manufacturers, transport associations and other technology companies – for safe and reliable rail mobility.



ZF IoT Cloud



**connect@rail**  
Dashboard