

WABCO

Technical Bulletin

Update to Disable CCVS Broadcast in E-version ABS ECUs Using TOOLWrench 2.26

Hazard Alert Messages

Read and observe all warnings and caution hazard alert messages in this publication. They provide information that can help prevent serious personal injury, damage to components, or both.

WARNING

To prevent serious eye injury, always wear safe eye protection when you perform vehicle maintenance or service.

Park the vehicle on a level surface. Block the wheels to prevent the vehicle from moving. Support the vehicle with safety stands. Do not work under a vehicle supported only by jacks. Jacks can slip and fall over. Serious personal injury and damage to components can result.

How to Obtain Additional Maintenance, Service and Product Information

If you have any questions regarding the material covered in this bulletin, or for more information about the WABCO product line, please contact the WABCO Customer Care Center at 855-228-3203, by email at wnacustomer care@wabco-auto.com, or visit our website: wabco-na.com

Overview

This update will disable the ABS broadcast of the Cruise Control Vehicle Speed (CCVS) message on J1939. Disabling this broadcast is intended to assist in resolving reported shift quality and hill start aid release quality concerns resulting from the Eaton automated manual transmission's use of this message which is not intended or approved to be used in the subject applications. Disabling this CCVS broadcast from ABS will not negatively impact vehicle operation or performance. Please contact Eaton for further concerns.

Update Procedures

This update requires you to install the following two files in your laptop:

- A. The Tractor ABS ECU TOOLWrench software version 2.26
- B. The J1939Diag_UDS.dll file

NOTE: The update process consists of two different procedures. Procedures must be performed in the order presented in this publication. Please review all of the following instructions carefully first before proceeding.

Install the Software and Supporting Files

When you receive the software TOOLWrench_Disable_PLC Gateway.zip file from WABCO, you must change the file extension to make the file executable as follows.

1. Create a specific folder in your laptop desktop.
2. Extract the two files from the .zip file and put them into this newly created folder. Make sure both files are in the same folder.
3. Right-click on the file "TOOLWrench 2.26 Turn OFF CCVS Broadcast" and choose "Rename" from the drop-down box that is displayed.
4. Select the file name and change the file extension from .XEX to .EXE. When finished, the file name will be TOOLWrench 2.26 Turn off CCVS.exe. Figure 1.

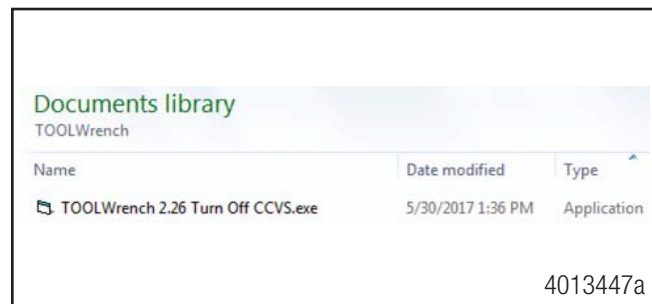


Figure 1

Run the Update

1. Turn the vehicle ignition switch to OFF.
2. Connect the computer to the vehicle's SAE J1939 Off-Board Diagnostic Connector using a diagnostic interface.
3. Turn the vehicle ignition switch to the ON position.
4. Double-click on TOOLWrench Version 2.26.exe to run the program.
5. When installing the software, verify you are using the correct diagnostic adapter and protocol. If you are not sure, use the selection screen for diagnostic interfaces by selecting the "Adapter Selection" menu in the top toolbar of the TOOLWrench application. Figure 2.

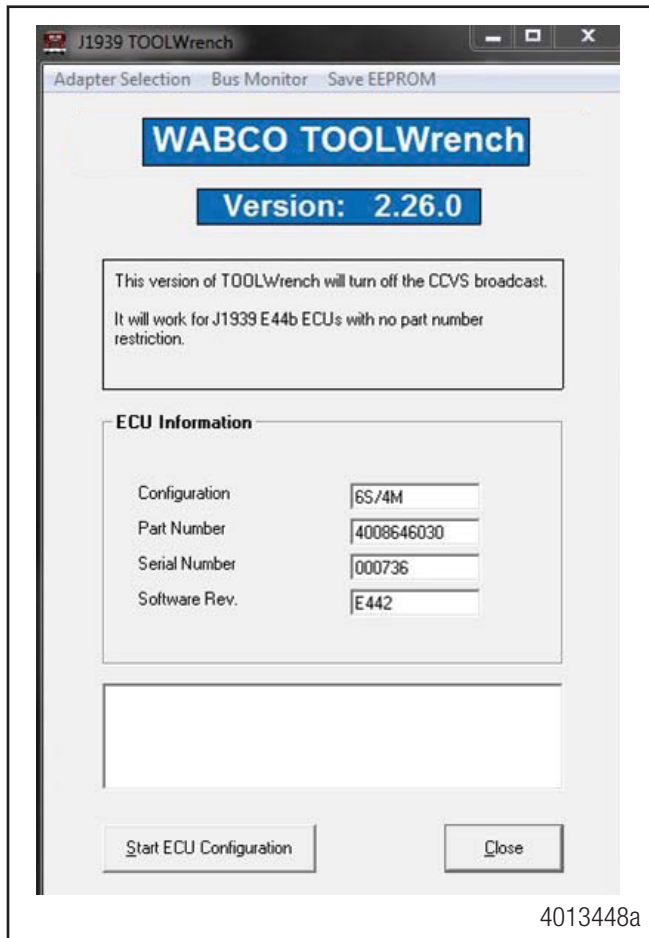


Figure 2

6. From the "Vendor" pull-down list, select the device name for your specific diagnostic interface (e.g. NEXIQ or NOREGON).
7. From the "Protocol" pull-down list, select J1939.
8. From the "Adapter" pull-down list, select the appropriate adapter for your device. Refer to the following example in Figure 3.

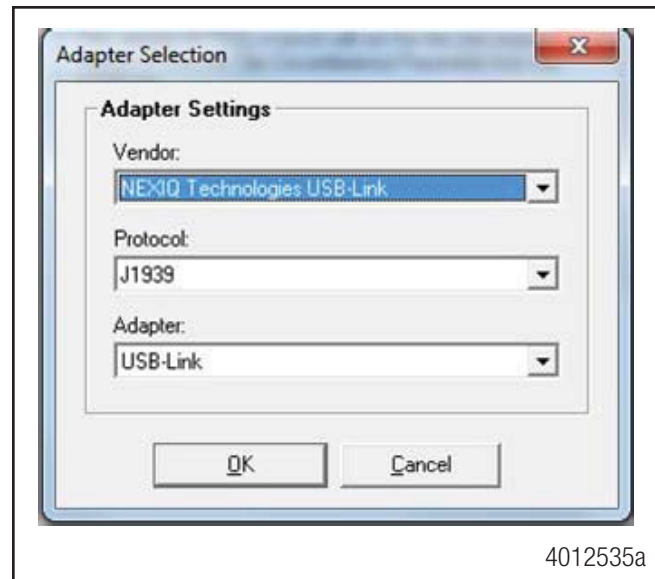


Figure 3

9. Once all of the adapter selection settings have been made, click "OK".
10. Click on the "Start ECU Configuration" button. Figure 4.

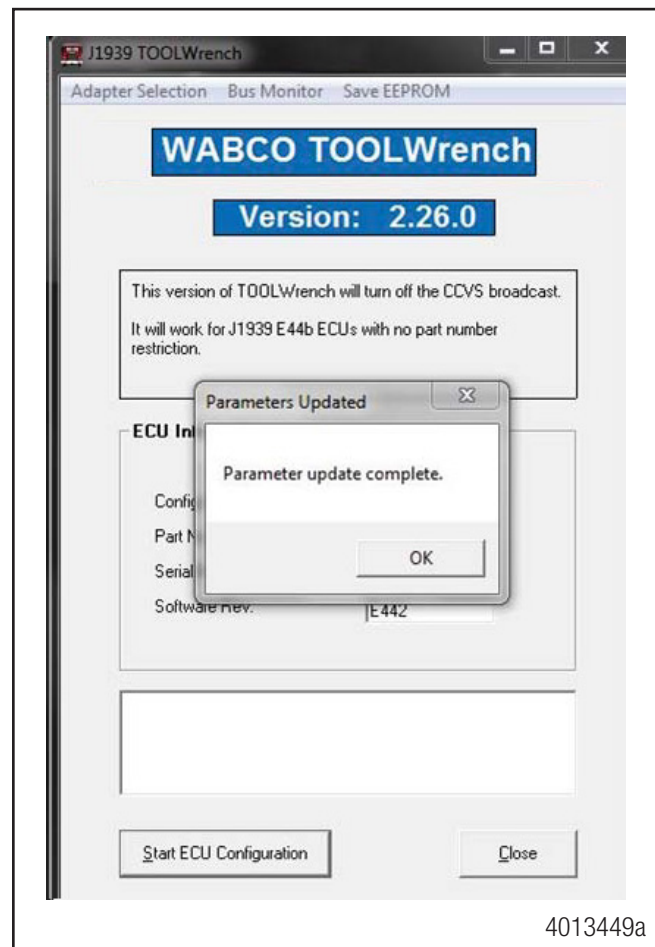


Figure 4

11. When the parameter update has been completed successfully, the notification shown in Figure 4 will be displayed.
12. Click "OK".
13. Cycle the ignition to complete the update.

WABCO

WABCO North America

1220 Pacific Drive
Auburn Hills, MI 48326 USA
855-228-3203
wabco-na.com

Information contained in this publication was in effect at the time the publication was approved for printing and is subject to change without notice or liability. WABCO reserves the right to revise the information presented or to discontinue the production of parts described at any time.

Copyright 2017
WABCO, Inc.
All Rights Reserved

Printed in USA

TP1786
Revised 06-17