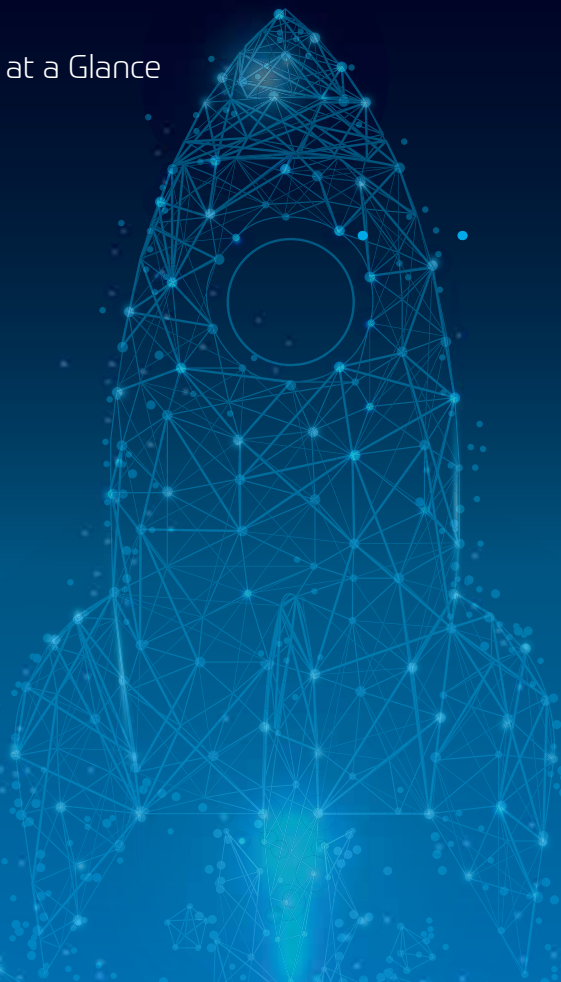


采埃孚集团简介 亚太地区

ZF Asia-Pacific at a Glance



Last updated July 2023



采埃孚股份公司

ZF FRIEDRICHSHAFEN AG



采埃孚是一家全球性技术公司，致力于为乘用车、商用车和工业技术领域提供下一代移动性系统产品。采埃孚能使车辆进行自主感知、决策和执行。在车辆运动控制、集成式安全系统、自动驾驶以及电驱动四大技术领域，采埃孚能为现有的汽车制造商以及初创出行服务供应商提供广泛的解决方案。采埃孚能为各种车型提供电驱动解决方案。凭借其产品组合，采埃孚始终致力于推动节能减排、环境保护以及出行的安全性。

集团2022年的销售额达到438亿欧元。集团目前在全球32个国家设有约168个生产驻地，拥有约16.5万名员工。

ZF is a global technology company supplying systems for passenger cars, commercial vehicles and industrial technology, enabling the next generation of mobility. ZF allows vehicles to see, think and act. In the four technology domains of Vehicle Motion Control, Integrated Safety, Automated Driving, and Electric Mobility, ZF offers comprehensive product and software solutions for established vehicle manufacturers and newly emerging transport and mobility service providers. ZF electrifies a wide range of vehicle types. With its products, the company contributes to reducing emissions, protecting the climate and enhancing safe mobility.

With some 165,000 employees worldwide, ZF reported sales of €43.8 billion in fiscal 2022. The company operates 168 production locations in 32 countries.

采埃孚在亚太

ZF IN ASIA-PACIFIC



自1981年进入中国以来，采埃孚在华获得了稳定长足的发展。40多年来，采埃孚经历了从中国销售、中国制造到中国开发的历史性跨越，如今正在向中国引领的目标持续迈进。

目前，采埃孚在中国设有近50家制造工厂以及近240个售后服务网点，采埃孚在中国各主要城市均有布局。目前，采埃孚全球员工总数超过16.5万名，其中中国员工人数约2万名。

除中国地区以外，采埃孚在日本、韩国、马来西亚、新加坡、泰国等多个地区设有多家驻地，并且在日本和韩国分别设有研发中心。

Since entering the Chinese market in 1981, ZF has achieved solid and substantial growth in China. For more than 40 years, ZF China has gone through the stages of "Sold in China", "Made in China", "Designed in China", and now making continued progress towards "Led from China". At present, ZF has set up its around 50 production sites, 240 aftersales networks, across major cities in China. With 165,000 employees worldwide, about 20,000 of them are in China.

Apart from China, ZF has established its locations in Japan, Korea, Malaysia, Singapore, Thailand, etc., It has also set up development centers in Japan and Korea.

事业部和业务单元

DIVISIONS AND BUSINESS UNITS

电驱传动技术事业部

动力系统，电子技术，电机技术与传动部件，车桥与传动系统

乘用车底盘技术

底盘零部件、底盘系统及模块、机电一体化底盘执行器、悬架技术

商用车解决方案事业部

商用车制动、转向、传动、悬挂、底盘等产品及系统解决方案；自动驾驶、电动化及智能网联解决方案

工业技术

船舶推进系统/特种车辆传动技术、非公路车辆传动系统和测试系统、风能技术和工业传动

售后市场

FMG、独立售后、制造、OE售后/特种传动配套

电子与高级驾驶辅助系统

乘员安全系统、被动安全电子装置

被动安全系统

充气装置、安全气囊系统、安全带系统、方向盘系统

主动安全技术

制动控制单元、管柱式电动助力转向系统、转向系统

Electrified Powertrain Technology

Electrified Powertrain Systems, Electronics, Powertrain Modules & Electric Motors, Axle Drives

Car Chassis Technology

Chassis Components, Chassis Systems & Modules, Mechatronic Chassis Actuators, Suspension Technology

Commercial Vehicle Solutions Division

Products and System Solutions of Commercial Vehicle Braking, Steering, Transmission, Suspension, Chassis and so on; Autonomous Driving, E-Mobility and Intelligent Connectivity Solutions

Industrial Technology

Marine & Special Driveline Technology, Off-Highway & Test Systems, Wind Power Technology & Industrial Drives

Aftermarket

Friction Materials Group, Independent Aftermarket, Manufacturing, Original Equipment Supplier/Specific Original Equipment

Electronics and ADAS

Advanced Driver Assistance Systems (ADAS), Passive Safety Electronics

Passive Safety Systems

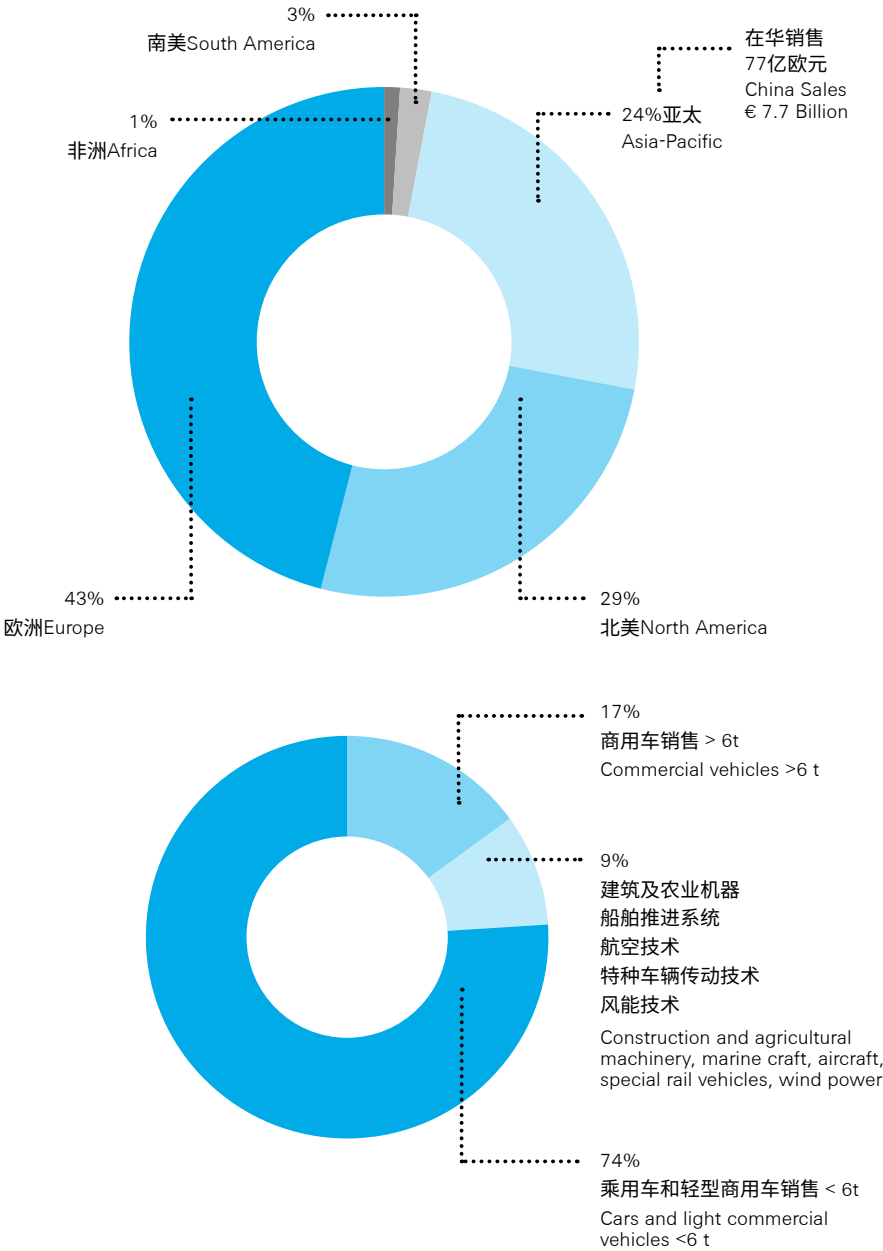
Inflators, Inflatable Restraint Systems, Seat Belt Systems, Steering Wheel Systems

Active Safety Systems

Brake Controls, Column Drive, Steering Systems

2022年采埃孚销售额：438亿欧元

OVERALL SALES €43.8 BILLION IN 2022



采埃孚上海工程技术中心（简称ECS）于2005年成立，是集团总部创新及技术的核心部门（Innovation & Technology）设立在中国的地区创新与研发中心。ECS秉承立足市场，服务市场的一贯宗旨，坚持以市场为导向，在汽车工业及其他相关行业如高铁、客车及卡车、工程机械及农用机械等领域始终走在技术发展与创新的最前沿。

核心能力包括产品设计、模拟仿真、齿轮开发、可靠性计算、材料测试与分析、测量技术、机械和机电零部件开发、振动和噪声分析、包括电驱动的各类汽车动力总成及底盘技术领域的台架测试。试验室的主要设备包括用于底盘零部件、减振器、驱动系零部件及变速器（内燃机和电驱动）、驱动电机、功率电子（逆变器）、车桥系统验证及新型电驱系统的各类试验台架，低背景噪声消声室，机电系统功能测试台，环境试验箱，并且拥有相应的配套工作车间设施。数字孪生方法论和架构的开发在集团全球虚拟验证战略中发挥着重要的作用。

以上的工程技术研发能力，已经在本土化创新型产品的开发项目中发挥了核心作用。

此外，ECS还拥有一支从事前瞻性开发的工程师团队，积极探索最新理念、跟踪市场发展、深入推进与高校的合作。比如该团队支持集团总部高阶辅助驾驶向中国客户的推广，尤其是其核心产品域控制器采睿星（ProAI）、集成式底盘控制软件cubiX等，通过与国内优秀科技企业合作，推动量产项目。ECS还拥有围绕工程中心核心技术的知识产权管理团队和项目管理团队。

目前的创新中心已经搭建了包括多传感器联合标定室、高阶辅助驾驶软硬件和算法开发平台、人工智能中心、车路云一体化智能网联开发平台、数字化仿真平台等一系列前沿科技研发所需要的方法和手段，大幅度提升了采埃孚着眼于未来的创新专业技能，为下一代智能出行相关的技术研发打下了扎实的基础。

为应对软件定义汽车的行业趋势和客户本地化开发的强烈需求，新的软件中心已经设立。新的软件中心团队已和多个事业部开展深入的合作，合作模式多样，包括基础软件或整体软件方案的软件开发，软件测试，集成释放和验证。不断增强的本地团队将全力以赴支持事业部业务的需求，导入了标准和高效的开发流程，为未来各类技术需求提供软件方案，提供优质及高效的软件服务。

ECS通过一支年轻并富有热情的专业团队服务于客户，致力于满足市场需求，创造核心价值，助力公司在中国赢得面向未来的业务机会。

ZF Engineering Center Shanghai (ECS), founded in 2005, is a regional innovation & R&D Center located in China established and led by the corporate department "Innovation & Technology" of ZF group. It upholds the market driven approach to put ZF staying ahead of the technological development in the automotive industry and other related industries such as high-speed railway, bus & truck, construction and agriculture machinery in the market and for the market.

Main competences are in the areas of design, simulation, gear development, reliability calculation, materials technology, GD/T measurement, mechanical & mechatronics component development, NVH, test benches for various powertrain including E-drive and chassis technology. Main laboratory equipment covers all kinds of test-rigs and prototype workshops for chassis parts, shock absorbers, powertrain components, transmissions (ICE and E-drive), drive motor, power electronics (inverter), axle validation and new E-mobility system, anechoic chamber, mechatronic system test bench, environmental test chamber, including related workshops. Digital Twin methodology and architecture development plays an important role in region for global Virtual Release strategy.

The mentioned competences have already played a key role in the implementation of local innovative core engineering projects.

ECS also has an advanced engineering team which is dedicated to new technologies development, actively exploring the latest concepts, tracking market trends, and deepening cooperation with universities. This team supports the promotion of high level ADAS technologies to Chinese customers, particularly focusing on core products such as the ProAI domain controller and the integrated chassis control software cubiX. Through collaboration with excellent domestic technology companies, they drive mass production projects as the target. ECS also has a team responsible for intellectual property management and project management related to the core technologies of the engineering center.

The current innovation center has established a range of edge technology research and development methods and tools, including a multi-sensor calibration laboratory, advanced ADAS system software, hardware, and algorithm development platform, artificial intelligence center, integrated intelligent connected development platform for vehicle-to-road cloud, and digital simulation platform. These advancements have significantly enhanced ZF's focus on future innovation and laid a solid foundation for the next generation of intelligent mobility related technology research and development.

The new software design center have been setup for the automotive trends of SDV (Software define vehicle) and high demands of local development for local business from customer. New software team have already deeply involved into the business of local division. The cooperation mode and scope are flexible for business needs including software development, testing, integration and validation of basic software solution or overall software solution. To enhance the local competence, the standard and efficient development process have been also established for our customer, and team capacity is also ramping-up for division request.

ECS's goal is to better serve the customer demands through a team of enthusiastic young professionals so that to create new opportunities for the company to succeed in the market.

采埃孚上海安亭技术中心（简称ATC）成立于2004年。该机构起初位于上海市区，于2014年从市区搬到安亭。总建筑面积约为34000平方米，现有约1400名左右的各类工程技术人员，主要从事汽车主动安全系统（制动和转向）、被动安全系统、电子和高级驾驶辅助系统等产品和技术的开发。

安亭技术中心自成立以来，不仅仅提供了适合中国市场的前沿技术和解决方案，还致力于持续地提升本土工程能力，进行本土创新，从而满足中国市场对于成本和功能的特殊需求。目前，安亭技术中心已形成从产品定义、设计开发、系统仿真、软件开发、功能安全、样件制造到测试验证的全价值链服务的能力，并承担着对批量投产、供应商开发、故障分析、产品培训等的技术支持工作。此外，安亭技术中心作为采埃孚汽车主动安全系统、被动安全系统、电子和高级驾驶辅助系统等事业部的亚太研发中心，还负责支持日本、韩国和东南亚的区域技术中心和工程办公室的产品开发工作。

安亭技术中心现拥有多达45个以上的实验室，配备了达到国际标准的先进试验设备，可以按照内部的和客户的标准进行各种不同的零部件和总成的性能、耐久、环境、震动、NVH、碰撞、电子等实验。在技术中心内部还有一个试车跑道，可以进行整车试验，并在中国东北的黑河拥有一个占地面积达315万平方米的冬季试车场。

中国现在已成为全球最大的汽车市场，并在新能源汽车和自动驾驶等多个领域居于世界领先地位。为了充分把握中国市场的业务发展机遇，采埃孚上海安亭技术中心将遵循“在中国，为中国”的战略，进一步强化本土研发水平，聚焦车辆运动控制、集成式安全系统、自动驾驶、电驱动这四大技术领域，以打造下一代的出行方案。

ZF Anting Technical Center (ATC) was founded in 2004 in Shanghai and moved from downtown to Anting in 2014. It has a total area of 34,000 square meters and nearly 1,400 employees, mainly focusing on R&D in automotive active safety systems (Brake and Steering), passive safety systems, electronics and ADAS.

Since it was established, Anting Technical Center not only has provided cutting-edge technologies and solutions tailored to the Chinese market, but also has been continuously enhancing the local engineering competence and encouraging innovation to meet the special needs of cost and functionality in China. It can now provide broad range of technical and engineering service from system requirements analysis, product design, software engineering, simulation, engineering quality assurance, functional safety analysis, prototype building to test and validation. It is also responsible to support series productions launch, supplier development, failure analysis and products training etc. Acting as the main engineering center for active safety systems, passive safety systems and electronics in Asia Pacific, Anting Technical Center also offers support to other ZF regional tech center and engineering offices in Japan, Korea and ASEAN.

In ATC, there are more than 45 labs, equipped with advanced test equipment meeting global standards. Various tests can be conducted according to internal and customer specifications, including performance test, durability test, environmental test, vibration test, NVH test, crash test and EMC test etc. Besides, there is an internal test track for vehicle test. In Heihe, north of China, Anting Technical Center also has a winter test ground with a total area of 3,150,000 square meters.

China is already the world's largest auto market as well as a leader in new energy vehicles and automated driving. To grasp this tremendous potential, ZF Anting Technical Center will follow the "In China, for China" strategy to further strengthen the local R&D capability, focusing on vehicle motion control, integrated safety, automated driving and electric mobility to provide the solutions to next generation mobility.

采埃孚商用车解决方案事业部亚太研发中心
ZF CVS APAC R&D Center

采埃孚商用车解决方案事业部（以下简称CVS）亚太研发中心正式成立于2010年，目前在亚太区的3个国家6个地点，拥有超过350名工程师的团队，专注于提升商用车安全性和效率的产品开发和应用，其中包括自动驾驶、高级驾驶辅助系统（ADAS）、制动系统、转向系统、传动系统、底盘和悬架技术、空气管理、挂车技术、电驱动解决方案以及围绕车队管理的数字服务。自成立以来，亚太研发中心一直为把突破性商用车技术引入亚太市场提供有力支持，例如，2021年4月，中国团队主导开发，在中国全球首发推出了最新一代商用车自动紧急制动系统，以及2021年底，针对中国市场推出了OptiPace预见性自适应巡航控制系统。核心研发能力涵盖机械产品设计、机电一体化产品设计、电驱系统设计和系统工程、系统功能开发、系统集成、零部件验证、系统测试、仿真、软件（设计和测试）、NVH以及功能安全和信息安全等领域。此外，强大的本土应用工程团队支持区域市场的技术服务、应用释放、车辆测试以及认证试验，涵盖车辆的横向和纵向控制、底盘悬架、传动零部件和系统、ADAS和高阶自动驾驶、电驱动解决方案等全系列产品线。

2018年CVS亚太研发中心成立了产品创新团队，致力于自动驾驶、电驱动及数字化等前瞻技术的研究与开发，重点关注亚太区特定的市场需求，技术要求和法规驱动。ADOPT（自动驾驶开放平台）是亚太区创新开发的第一个成果，它作为虚拟驾驶员与相关的车辆控制系统和传感器之间的智能接口，集成CVS在车辆动态控制和传动控制方面的丰富经验，基于车辆安全性和运行效率原则，将虚拟驾驶员的驾驶指令转化为车辆的实际动态控制。ADOPT可显著提高自动驾驶车辆运动控制的操控性，运行安全性和效率。随着市场、法规的标准和要求不断提高，应用的产品日趋复杂，CVS亚太研发中心的研发能力也在持续不断地增强和扩展。

CVS研发工程团队的使命和目标不仅是提供尖端技术和最优的客户系统解决方案，同时致力于成为客户可信赖的、高效能的下一代出行解决方案合作伙伴，让客户在日益复杂的生态系统中能够在自动驾驶、电动化和网联化等未来技术方面获得成功。

采埃孚商用车解决方案事业部亚太研发中心在中国分布在上海、青岛、济南、嘉兴四个城市。CVS上海研发中心是亚太研发中心的管理总部，主要关注应用工程、系统工程、软件开发、机电一体化开发、底盘和悬挂系统开发、ADAS平台开发以及创新开发。该研发中心拥有产品应用专家，并具备设计、仿真、系统和功能开发、硬件在环HIL、软件开发和测试、功能安全和网络安全等核心能力。CVS青岛研发中心主要关注轮端解决方案和真空泵产品的开发，是全球真空泵产品线的核心开发基地，也是“在中国”，“为全球”的实践证明。该研发中心拥有产品专家，并具备系统、产品设计、验证与测试、应用和技术项目管理等核心能力。

采埃孚商用车解决方案事业部济南研发中心

CVS济南研发中心拥有近3000平方米的测试中心，超过1000平方米的研发办公室（扩建区域于2021年投入使用），关注产品设计、仿真、产品验证与测试、系统工程、材料工程以及应用工程的核心开发能力，产品覆盖制动系统包括常规制动系统以及ABS和EBS、传动系统包括可支持自动驾驶的模块化和集成式自动机械变速箱AMT控制产品、空气管理系统包括适配混动和电动车的电动空压机eComp 2.0产品、电磁阀和机电一体化产品等，全面支持CVS产品路线图在中国的实施。得益于毗邻生产制造基地的优势，新扩建的工程中心提高了其在支持本地化、促进供应链开发和成本优化活动方面的效率。

采埃孚商用车解决方案事业部嘉兴研发中心

CVS嘉兴研发中心拥有近1500平方米新建的测试中心，超过1400平方米的研发办公室，关注产品设计、仿真、产品验证与测试、系统工程、以及应用工程的核心开发能力，产品覆盖电驱动产品开发、变速箱系统包括手动变速箱和自动变速箱全系列、车桥系统解决方案、转向系统包括传统液压转向、电液转向和新一代的电控转向产品、离合器以及离合器分离控制产品。嘉兴研发中心既是电驱动技术也是转向技术的全球两大核心开发基地之一，同时也是全球三大电驱动产品测试中心之一。嘉兴本土开发团队将强有力地支持亚太电驱动产品的开发、测试和应用，全面支持和服务亚太客户电驱动业务的蓬勃发展。得益于毗邻生产制造基地的优势，该研发中心可提高其在支持本地化、促进供应链开发和成本优化活动方面的效率。

ZF Division CVS R&D Center in Asia-Pacific was officially founded in 2010 and meanwhile comprises 6 locations in 3 countries with over 350 engineers focusing on product development and application for commercial vehicles to increase safety and efficiency. This includes autonomous driving, ADAS, braking systems, steering system, driveline system, chassis and suspension technologies, air management as well as trailer technologies and digital services around fleet management.

Since it was established, CVS R&D has supported the introduction of groundbreaking commercial vehicle technologies into the Asia-Pacific market. For example, CVS launched its first advanced autonomous emergency braking system, OnGuardMAX, developed by its China team as world premier in April 2021, and launched OptiPace (Predictive Economic Cruise Control) for China market by the end of 2021. Key competencies cover areas like mechanical and electromechanical design, emobility design, system engineering and function development, device qualification and system qualification, application engineering, simulation, Software (Design & Test), NVH as well as functional safety and cyber security. Besides that, CVS' strong regional application engineering team can perform various application release, vehicle tests and homologation tests for braking, steering systems, driveline components & systems, ADAS systems, chassis, and suspension systems, emobility and all other products in its portfolio.

In 2018, a regional Product Innovation team was established and is now working intensively on autonomous driving Technologies, emobility as well as connectivity technologies with a specific perspective on regional needs, requirements and regulations. A first product resulting from these innovation activities was ADOPT which has significantly increased performance, efficiency and safety of vehicle motion control by implementing an intelligent interface between the Virtual Driver (autonomous intelligence) and the relevant set of vehicle control systems and sensors and by executing driving instructions from a Virtual Driver to real vehicle motion under principles of safety and efficiency applied from deep experience in vehicle dynamics and powertrain control. These competencies are continuously strengthened and enhanced along with increasing standards and demands from markets and regulations as well as increasing complexity of applied products.

The mission and purpose of our engineers is not only to provide cutting-edge technologies and regional customers system solutions but to act as a reliable and competent partner for next generation mobility enabling our customers in increasingly complex ecosystems to succeed in future technologies like automated driving, electric mobility or connectivity.

CVS R&D Centers in China are located in Shanghai, Qingdao, Jinan and Jiaxing. The CVS R&D Center in Shanghai is working as main hub of APAC R&D with focus on application engineering, system engineering, software engineering, electromechanical design, chassis and suspension technologies and ADAS core development and product innovation. Competency includes design, simulation, system and function development, HIL, software design and testing, function safety and cyber security, application expert of the complete ZF Division CVS product scope. The CVS R&D Center in Qingdao is working as a main R&D hub focused on wheel end solution and vacuum pump. Qingdao is the global core development center for vacuum pump, i.e. China for global. Competency includes design, testing, system, application and technical project management etc.

ZF CVS R&D Center in Jinan

The CVS R&D Center in Jinan hosts a contemporary test lab of nearly 3,000 square meters, R&D office of over 1,000 square meters (new premises opened in 2021), working as a local product innovation center with focus on design, simulation, testing, system, material engineering and application of the complete ZF Division CVS product scope ranging from braking products for ABS and EBS, Driveline (e.g. modular and integrated AMT for autonomous driving), Air management (e.g. eComp 2.0 for hybrid and electric vehicles), Solenoid Valves and electromechanical components, supporting the CVS product roadmap. Benefiting from close proximity to manufacturing, the new expanded engineering center reinforces its efficiencies in supporting localization, facilitating supply chain development and cost optimization activities.

ZF CVS R&D Center in Jiaxing

The CVS Engineering Center in Jiaxing hosts a newly established test lab of nearly 1,500 square meters, PE office of over 1,400 square meters, working as a main R&D hub with focus on design, simulation, testing, system, material engineering product focus is emobility, transmission systems, axle systems, steering systems, clutch and actuators. Jiaxing is one of two global core development centers for emobility and steering systems in APAC. The Jiaxing emobility testing center currently being established is one of the 3 global emobility test locations which supports local and global emobility product development testing and application, to best serve the thriving APAC market.

Benefiting from close proximity to manufacturing, the strong local engineering competency can reinforce its efficiencies in supporting localization, facilitating supply chain development and cost optimization activities.

采埃孚广州技术中心
ZF Guangzhou Technical Center

采埃孚广州技术中心（简称GTC）成立于2020年，旨在进一步提升采埃孚集团在中国的技术开发能力，并更好地服务在中国南方的客户。其工程办公室已开始运营，并将分期建设办公楼、实验楼、车间、试车跑道等设施，一期于2023年建成，并投入使用。

广州技术中心依托集团强大的技术实力以及粤港澳大湾区的优质人才，聚焦软件开发、机电一体化设计、系统集成等核心能力，提供集团各产品线如主动安全系统、被动安全系统、自动驾驶、电驱动系统等的技术解决方案。

汽车行业正在经历一轮电动化、智能化、网联化、数字化的产业巨变，广州技术中心将助力采埃孚集团在中国实现打造下一代出行方案的愿景。

ZF GuangZhou Technology Center (GTC), founded in 2020, aims to further enhance in China zf-group technology development ability, and to better serve customers in southern China. The engineering office has begun operation, and the office building, experimental building, workshop, test track and other facilities will be constructed in phases. The first phase will be completed and put into use in 2023.

Guangzhou Technical Center will rely on ZF Group's strong technical strength and take the advantage of talent in Guangdong-Hong Kong-Macao Greater Bay Area to provide technical services and solutions in the area of active safety systems (braking and steering), passive safety systems, electronics and ADAS, electrified powertrain etc., focusing on software development, mechatronics design and system integration.

The automobile industry is experiencing a round of great changes signified by electrification, intelligentization, connectivity and digitalization. Guangzhou Technical Center will contribute to the realization of ZF Group's vision "Shaping next generation mobility" in China.

采埃孚日本技术中心
ZF Japan Technical Center

采埃孚日本技术中心（JTC）于2007年成立于横浜，现有员工约150人，总占地面积4880平方米，工程研发以被动安全系统为主，其广泛的工程研发领域还包括制动、转向、ADAS、安全电子、电驱动、底盘、跨部门职能和功率电子。自技术中心成立以来，JTC不断扩展它的业务，不仅能够提供针对日本市场的尖端技术和解决方案，而且还不断增强本土化的工程能力，鼓励创新，以满足日本在成本和功能方面的特殊需求。目前，它可以提供从系统需求分析、产品设计、软件工程、仿真、工程质量保证、功能安全分析、样件制造到测试和验证等广泛的技术和工程服务。它也负责支持系列产品发布、供应商开发、故障分析和产品培训。JTC设有10个实验室，拥有先进的检测设备和2台位于车库的车辆升降机。可根据内部和客户规范进行各种试验，包括性能试验、耐久性试验、环境试验、振动试验、NVH试验和碰撞试验。JTC还专注于日本汽车制造商的项目协调和产品应用，并提供快速的问题解决方案和支持，包括质量问题的解决等。

ZF Japan Technical Center (JTC) was founded in 2007 in Yokohama as Corporate R&D Center. The location accommodates around 150 employees in the total area of 4,880 square meters, focusing mainly Passive Safety Systems but also covering broad areas of engineering: Braking, Steering, ADAS, Safety Electronics, E-Mobility, Chassis, Cross Functions and Power Electronics. Since it was established, JTC has expanded its activities not only providing cutting-edge technologies and solutions tailored to the Japanese market, but also has been continuously enhancing the local engineering competence and encouraging innovation to meet the special needs of cost and functionality in Japan. It can now provide broad range of technical and engineering service from system requirements analysis, product design, software engineering, simulation, engineering quality assurance, functional safety analysis, prototype building to test and validation. It is also responsible to support series productions launch, supplier development, failure analysis and products trainings. JTC is equipped with 10 labs, advanced testing equipment and two car lifters at the garage area. Various tests can be conducted according to internal and customer specifications, including performance test, durability test, environmental test, vibration test, NVH test, and crash test. JTC is also focusing on project coordination and product application for JOEM projects world-wide and offering quick problem solution and supports including quality issues.

采埃孚被动安全技术事业部韩国技术中心 ZF Passive Safety Technology Division's Korea Technical Center

采埃孚被动安全技术事业部韩国技术中心（KTC）成立于2016年，位于韩国京畿道安阳市，自2014年起成为韩国现代起亚汽车集团（HKMC）安全气囊的一级供应商。公司占地面积841.3平方米，员工近32人，主要从事安全气囊、安全带等汽车被动安全系统的研发。

韩国技术中心自成立以来，一直在开发与汽车安全相关的部件和系统，为本地及海外客户提供设计、仿真、技术支持服务以及制作供测试与验证的样件。它还负责支持批量生产的启动、供应商开发和产品培训等。

韩国技术中心设有SWS、IRS、SBS样机车间和试验室，配备了符合国际样件与测试标准的样件室和试验设备。技术中心可生产各种安全气囊模块，并可根据内部要求和客户规范进行各种测试，包括性能测试、环境测试。

通过不断研发新的安全气囊技术，韩国技术中心成为当地安全气囊市场的领先技术开发商。KTC旨在提高汽车安全技术并鼓励创新，以满足客户的特殊需求。KTC为行业贡献了各种先进技术。KTC将成为当地领先的安全技术提供商，为客户提供最安全的产品。

ZF Passive Safety Technology Division's Korea Technical Center (KTC) was founded in 2016 at Anyang, Gyeonggi, Korea as HKMC's Tier 1 supplier of Airbag assigned since 2014. It has a total area of 841.3 square meters and nearly 32 employees, mainly focusing on R&D in automotive passive safety systems like airbag and seat belt.

Since established, the KTC has been developing relevant components and systems for automotive safety parts. It has providing design, simulation, technology supporting service, prototype building to test and validation for domestic and overseas' customer. It is also responsible to support serial production launch, supplier development, and product training etc.

There are SWS, IRS, SBS prototype shop and testing lab equipped with global standard proto & test equipment at KTC. It could build all kinds of airbag modules, various tests can be conducted according to internal and customer specification including performance test and environmental test.

The Korea Technical Center is a leading technology developer in the local airbag market by proposing new airbag technology. The KTC aims to enhance car safety technology and encourage innovation to meet customer's special needs. KTC contributes various advanced technology to the industry. KTC will be the leading local safety technology provider to produce the safest products.

Next
Generation
Mobility.
NOW.
未来出行 即刻启程

目录 CONTENT

公司名称 / Company name	简称 / Abbr.	页码 / Page
1 采埃孚亚太集团有限公司 ZF Asia Pacific Group Co., Ltd.	ZFAP	P17
2 采埃孚（中国）投资有限公司 ZF (China) Investment Co., Ltd.	ZFCN	P19
3 采埃孚汽车科技（上海）有限公司-设备制造中国 ZF Automotive Technologies (Shanghai) Co.,Ltd.-Maschinenbau China	MBCN	P20
4 采埃孚富奥底盘技术（长春）有限公司 ZF Fawer Chassis Technology (Changchun) Co., Ltd.	CTC	P21
5 采埃孚伦福德汽车系统（沈阳）有限公司 ZF Lemförder Automotive Systems (Shenyang) Co., Ltd.	LAS	P22
6 上海采埃孚伦福德底盘技术有限公司 ZF Lemförder Shanghai Chassistechnology Co., Ltd.	LSC	P23
7 上海汇众萨克斯减振器有限公司 Shanghai Sachs Huizhong Shock Absorber Co., Ltd.	SHS	P24
8 上海汇众萨克斯减振器有限公司沈阳分公司 Shanghai Sachs Huizhong Shock Absorber Co., Ltd. Shenyang Branch	SHY	P25
9 采埃孚汽车底盘系统（北京）有限公司 ZF Chassis Systems (Beijing) Co., Ltd.	ZFCSB	P26
10 采埃孚福田自动变速箱（嘉兴）有限公司 ZF Foton Automated Transmission (Jiaxing) Co., Ltd.	ZFTC	P27
11 采埃孚商用车技术（嘉兴）有限公司 ZF Commercial Vehicle Technology (Jiaxing) Co., Ltd.	ZFCJ	P28
12 采埃孚传动技术（嘉兴）有限公司 ZF Drivtech (Jiaxing) Co., Ltd.	ZFDJ	P29
13 采埃孚商用车底盘技术（上海）有限公司 ZF Chassistechnology Commercial Vehicles (Shanghai) Co., Ltd.	CCV	P30
14 采埃孚汽车零部件系统（上海）有限公司 ZF Automotive Components & Systems (Shanghai) Co., Ltd.	ZFAS	P31
15 十堰东风采埃孚减振器有限公司 ZF Dongfeng Shock Absorber Shiyang Co., Ltd.	SDS	P32
16 天合富奥商用车转向器（长春）有限公司 TRW Fawer Commercial Vehicle Steering (Changchun) Co., Ltd.	TFCVS	P33
17 采埃孚（上海）管理有限公司 ZF (Shanghai) Management Co., Ltd.	/	P34
18 采埃孚商用车系统（济南）有限公司 ZF Commercial Vehicle Systems (Jinan) Co., Ltd.	/	P35
19 采埃孚商用车系统（青岛）有限公司 ZF Commercial Vehicle Systems (Qingdao) Co.,Ltd.	/	P36
20 采埃孚商用车系统（青岛）有限公司济南分公司 ZF Commercial Vehicle Systems (Qingdao) Co., Ltd. Jinan Branch	/	P37
21 广东威伯科汽车制动系统有限公司 Guangdong WABCO Vehicle Brakes Co., Ltd.	/	P38
22 长春威伯科汽车控制系统有限公司 Changchun WABCO Vehicle Control System Co.,Ltd.	/	P39
23 威伯科物流（青岛）有限公司 WABCO Logistics (Qingdao) Co., Ltd.	/	P40
24 上海采埃孚变速器有限公司 ZF Transmissions Shanghai Co., Ltd.	ZFTS	P41
25 采埃孚传动系统零部件（上海）有限公司 ZF Powertrain Modules Shanghai Co., Ltd.	ZFPMS	P42
26 采埃孚销售服务（中国）有限公司 ZF Services (China) Co., Ltd.	MACN	P43

公司名称 / Company name	简称 / Abbr.	页码 / Page
27 采埃孚香港有限公司 ZF Services Hong Kong Limited	MAHK	P44
28 青岛天摩亚太汽车零部件有限公司 Qingdao FMG Asia Pacific Co., Ltd.	FMG	P45
29 采埃孚汽车科技（上海）有限公司—安亭技术中心 ZF Automotive Technologies (Shanghai) Co., Ltd. - Anting Technical Center	ATC	P46
30 采埃孚（广州）科技有限公司 ZF (Guangzhou) Technologies Co.,Ltd	ZGTC	P47
31 卢卡斯伟利达廊重制动器有限公司 LucasVarity Langzhong Brake Co., Ltd.	LVLB	P48
32 南方天合底盘系统有限公司 CSG TRW Chassis Systems Co., Ltd.	CTCS	P49
33 采埃孚汽车系统（上海）有限公司 ZF Automotive Systems (Shanghai) Co.,Ltd.	ZASS	P50
34 采埃孚汽车系统（武汉）有限公司 ZF Automotive System (Wuhan) Co., Ltd.	ZASW	P51
35 采埃孚汽车科技（张家港）有限公司 ZF Automotive Technologies (Zhangjiagang) Co., Ltd.	ZATZ	P52
36 采埃孚汽车科技（上海）有限公司 ZF Automotive Technologies (Shanghai) Co., Ltd.	ZATS	P53
37 天合富奥汽车安全系统（长春）有限公司 TRW Fawer Automobile Safety Systems (Changchun) Co., Ltd.	TFASS	P54
38 采埃孚汽车被动安全系统（上海）有限公司 ZF Automotive Passive Safety Systems (Shanghai) Co., Ltd	ZAPSS	P55
39 采埃孚东方汽车安全技术（西安）有限公司 ZF Dongfang Automotive Safety Technology (Xi'an) Co., Ltd.	ZDAST	P56
40 采埃孚汽车安全系统（日照）有限公司 ZF Automotive Safety System (Rizhao) Co., Ltd.	ZASSR	P57
41 采埃孚汽车安全系统（武汉）有限公司 ZF Automotive Safety System (Wuhan) Co., Ltd.	/	P58
42 采埃孚汽车安全系统（威海）有限公司 ZF Automotive Safety Systems (Weihai) Co. Ltd.	/	P59
43 采埃孚电子（珠海）有限公司 ZF Electronics (Zhuhai) Co., Ltd.	EK ZH	P60
44 采埃孚电驱科技（沈阳）有限公司 ZF Electric Mobility Technologies(Shenyang) Co.,Ltd.	ZF ESY	P61
45 采埃孚电驱技术（杭州）有限公司 ZF Electrified Powertrain Technologies (Hangzhou) Co., Ltd.	ZFEHZ	P62
46 柳州采埃孚机械有限公司 Liuzhou ZF Machinery Co., Ltd.	LZZF	P63
47 采埃孚（天津）风电有限公司 ZF Wind Power (Tianjin) Co., Ltd.	ZFWP	P64
48 采埃孚一拖（洛阳）车桥有限公司 ZF YTO (Luoyang) Axle Co., Ltd.	ZFYTO	P65
49 采埃孚传动系统（北京）有限公司 ZF Powertrain System (Beijing) Co., Ltd.	ZFPS	P66
50 采埃孚合力传动技术（合肥）有限公司 ZF Heli Drivtech (Hefei) Co. Ltd.	ZFHD	P67
51 台湾采埃孚传动科技股份有限公司 ZF Taiwan Ltd.	ZFTW	P68
52 瑞孚宏昌船舶推进系统股份有限公司 ZF Faster Propulsion System Co., Ltd.	ZF FPS	P69



ZF Way

● ● ● ● ● WINNING TOGETHER

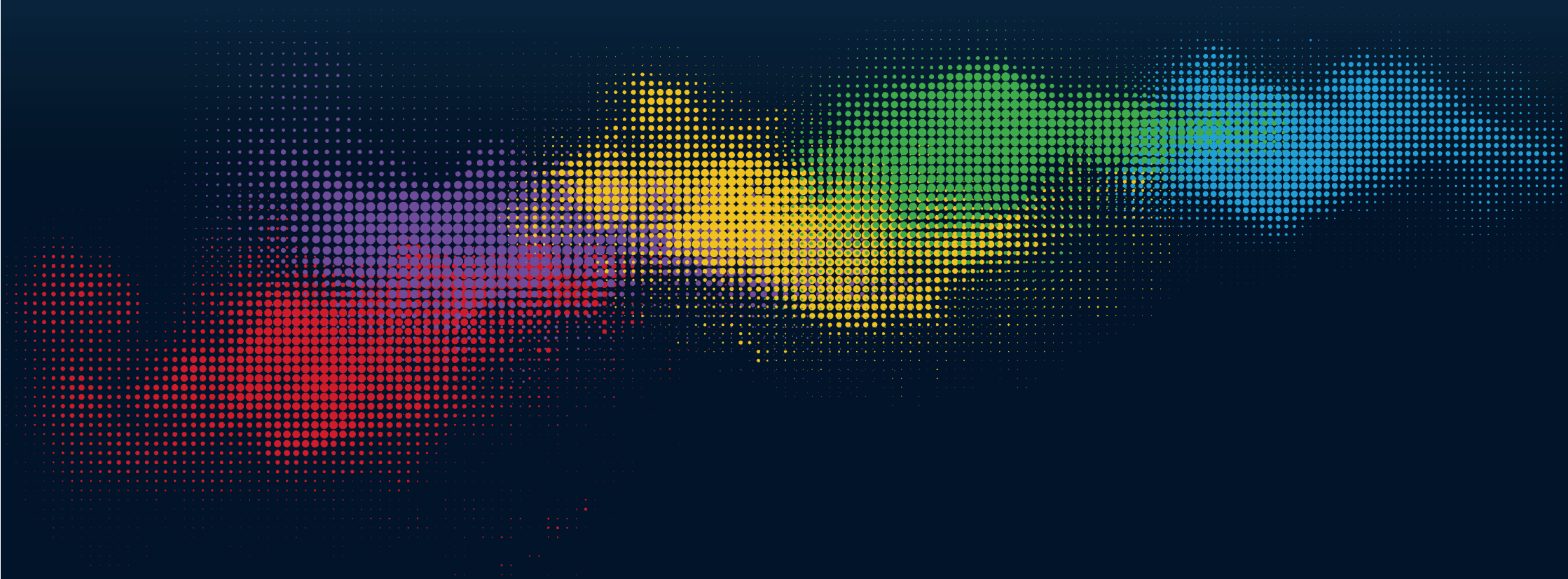
激情
Passion

预见
Anticipation

多元
Diversity

赋权
Empowerment

责任
Accountability



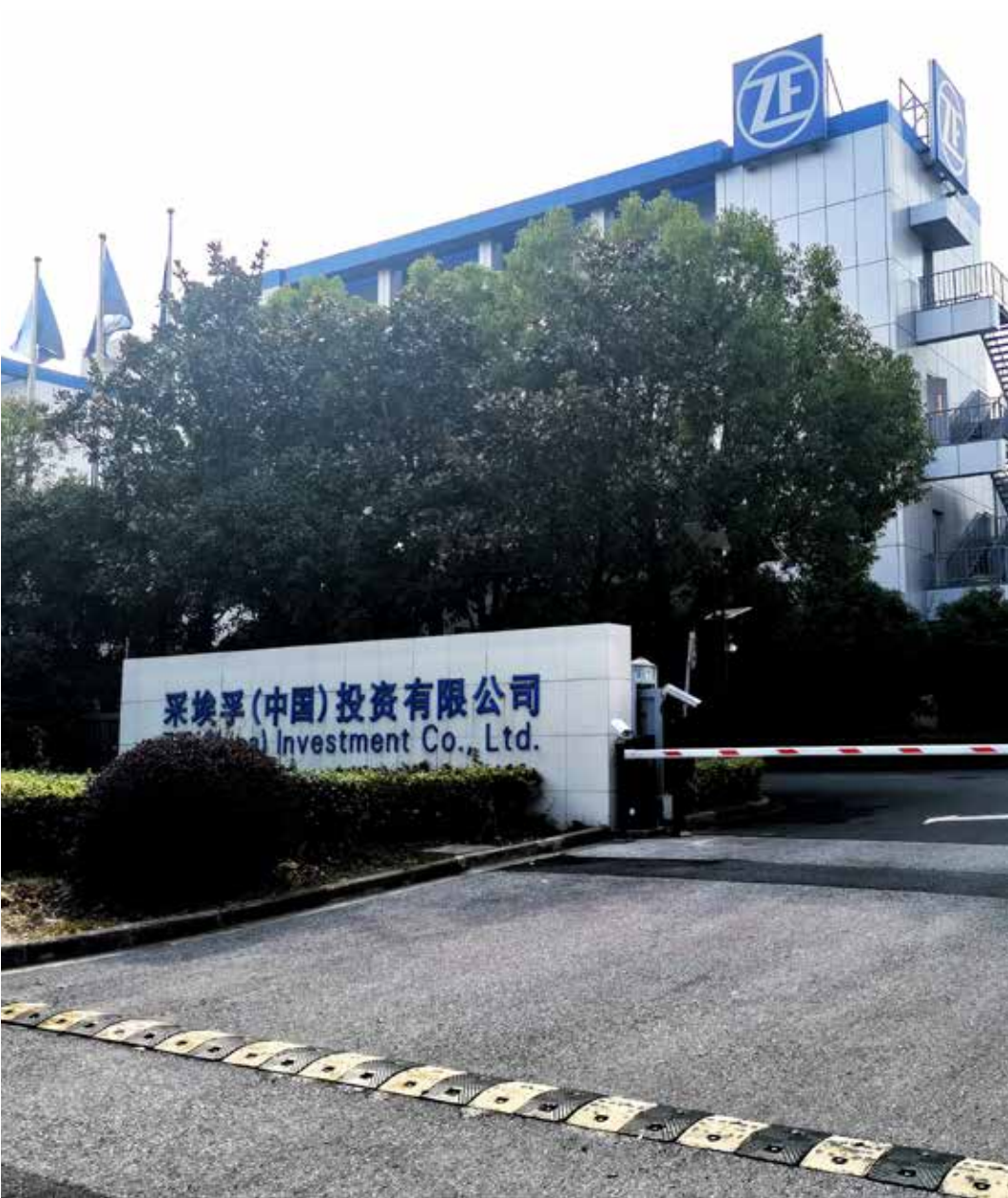
主要办公地点
MAIN OFFICES



采埃孚亚太集团有限公司
ZF Asia Pacific Group Co., Ltd.

业务范围	采埃孚亚太集团有限公司作为采埃孚集团的亚太区总部，负责该地区的战略制定、投资决策（包括设立研发中心和工厂等）、管理决策、业务决策、财务管理、资金管理、税务管理、外汇管理、法务，IT、人事管理、培训管理、销售管理、营销宣传、质量管理、采购和物流管理、进出口以及向旗下投资及管理的分子公司提供相关咨询和其他服务。
Business Scope	As ZF Asia Pacific Headquarter, ZF Asia Pacific Group Co.,Ltd is responsible for regional strategic formulation and investment decisions (including the establishment of R&D centers and factories), management decisions, business decisions, financial management, capital management and tax management, Foreign exchange management, legal affairs, IT, human resource management, training management, sales management, marketing promotion, quality management, purchasing and logistics management, import & export and provide related consulting and other service for investmt and management subsidiaries.
地址 / 邮编	上海市徐汇区苍梧路519号光启园四期2号楼 / 200233
电话 / 传真	+86 21 6120 1166 / +86 21 6128 2135
形式	外商独资企业
成立日期	2009年6月1日
员工人数	约1200
Address	Building 2, Phase IV, Guangqi Park, No.519 Cangwu Rd, Xuhui District, Shanghai, 200233
Tel / Fax	+86 21 6120 1166 / +86 21 6128 2135
Legal Form	Wholly Foreign Owned Enterprise
Foundation Date	Jun. 1, 2009
Number of Employees	Approx. 1200

主要办公地点
MAIN OFFICES



采埃孚（中国）投资有限公司
ZF (China) Investment Co., Ltd.

业务范围	采埃孚（中国）投资有限公司是采埃孚集团的中国区总部，同时也是先进的研发中心、服务中心和创新基地：研发涵盖电驱传动产品、底盘产品、工业产品的软硬件开发及材料测试等基础研发工作；服务内容包括财务、物料采购及IT等；创新基地的建立主要着眼于前瞻性技术开发，增强与中国本地商业和技术生态系统的互动、合作。
Business Scope	ZF (China) Investment Co., Ltd is the Headquarter of ZF China, as well as the advanced R&D Center, service center and innovation base: covering basic R&D work such as software and hardware development and material testing for electric drive transmission products, chassis products and industrial products; service including financial, material and IT etc., the establishment of innovation base mainly focus on perspective technical development, enhancing the interaction and cooperation with local business and technical eco-system.
地址 / 邮编	上海市松江区九亭镇九泾路889号 / 201615
电话 / 传真	+86 21 3761 7000 / +86 21 3761 7400
形式	外商独资企业
成立日期	2005年1月24日
员工人数	约1200
网址	www.zf.com
电子邮件	zfchina@zf.com
北京分公司	北京市朝阳区亮马桥路32号高斓大厦826室 / 100125
Address	No. 889 Jiuqing Road, Jiuting Town, Songjiang District, Shanghai, P. R. China, 201615
Tel / Fax	+86 21 3761 7000 / +86 21 3761 7400
Legal Form	Wholly Foreign Owned Enterprise
Foundation Date	Jan. 24, 2005
Number of Employees	Approx. 1,200
Web site	www.zf.com
E-Mail	zfchina@zf.com
Beijing Branch	Room 826, Golden Land Building, No. 32 Liangma Bridge Road, Chaoyang District, Beijing, P. R. China, 100125

采埃孚汽车科技（上海）有限公司-设备制造中国
ZF Automotive Technologies (Shanghai) Co.,Ltd.-Maschinenbau China

地址 / 邮编	上海市嘉定区安晓路255号 / 201814
电话	+86 21 6958 5109
形式	外商独资企业
成立日期	2020年1月15日
员工人数	约70
Address	No.255 An Xiao Road, Jiading District, Shanghai, P.R.China, 201814
Tel	+86 21 6958 5109
Legal Form	Wholly Foreign Owned Enterprise
Foundation Date	Jan. 15, 2020
Number of Employees	Approx. 70



业务范围
自动化装配线和测试设备的开发和安装调试；并提供售后服务、维修保养服务、相关技术咨询、技术支持、测试服务。

Business Scope
Development, construction and commissioning of assembly, automation and testing machines for the automotive industry; and provide after sales service, maintenance service, technology supporting service, testing service.

采埃孚富奥底盘技术（长春）有限公司
ZF Fawer Chassis Technology (Changchun) Co., Ltd.

地址 / 邮编	吉林省长春市东南湖大路5000号 / 130033
电话 / 传真	+86 431 8580 0809
形式	合资企业
成立日期	2003年11月25日
员工人数	约400
外方	采埃孚 (中国) 投资有限公司 51%
中方	富奥汽车零部件股份有限公司 49%
Address	No. 5000 East Nan Hu Road, Changchun, Jilin Province, P. R. China, 130033
Tel / Fax	+86 431 8580 0809
Legal Form	Joint Venture
Foundation Date	Nov. 25, 2003
Number of Employees	Approx. 400
Foreign Partner	ZF (China) Investment Co., Ltd. 51%
Local Partner	Fawer Automotive Parts Limited Company 49%

业务范围
汽车底盘系统及零部件的开发、生产、装配和销售，为乘用车配套的前后桥系统提供装配业务，生产控制臂，稳定杆连接杆，差速器壳体等底盘零部件。

Business Scope
Development, production, assembly and sales of passenger car chassis system components, such as control arms, stabilizer links and differential housing, and provide after-sale service of products.



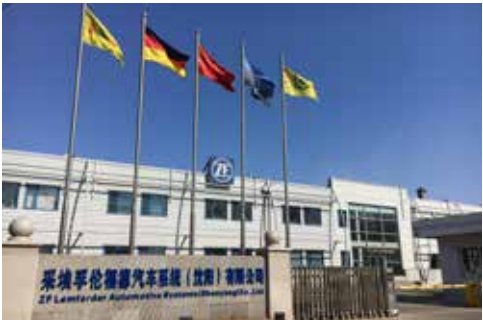
采埃孚伦福德汽车系统（沈阳）有限公司

ZF Lemförder Automotive Systems (Shenyang) Co., Ltd.

地址 / 邮编	沈阳经济技术开发区开发大路8甲3号 / 110141
电话 / 传真	+86 24 2534 8116 / +86 24 2537 0930
形式	外商独资企业
成立日期	2003年1月5日
员工人数	约800
沈北分公司	辽宁省沈阳市沈北新区蒲平路18号 / 110122
Address	No.A8-3, Kaifa Ave. Economic & Technological Development Zone, Shenyang , Liaoning Province, P.R. China. 11014.
Tel / Fax	+86 24 2534 8116 / +86 24 2537 0930
Legal Form	Wholly Foreign Owned Enterprise
Foundation Date	Jan. 5, 2003
Number of Employees	Approx. 800
Shenbei Branch	No. 18 Puping Road, Shenbei New District, Shenyang, Liaoning Province, P. R. China, 110122

业务范围
汽车底盘、前后桥及其附件、汽车变速器换挡系统及其附件、汽车电子装置和零件、新能源汽车电动发动机的研制、开发、生产、销售和技术服务。

Business Scope
The development, production, sale, and technical service of front and rear axles and other relevant chassis components, as well as for shifter, electrical devices and components for passenger cars, and electrical engine for new energy vehicle.



上海采埃孚伦福德底盘技术有限公司

ZF Lemförder Shanghai Chassistech Co., Ltd.

地址 / 邮编	上海市奉贤区环城北路1088号 / 201401
电话 / 传真	+86 21 6758 8802 / +86 21 6758 8829
形式	合资企业
成立日期	1995年12月28日
员工人数	约440
外方	采埃孚 (中国) 投资有限公司 76%
中方	上海机动车辆配件有限公司 24%
Address	No. 1088 North Huancheng Road, Fengxian District, Shanghai, P. R. China, 201401
Tel / Fax	+86 21 6758 8802 / +86 21 6758 8829
Legal Form	Joint Venture
Foundation Date	Dec. 28, 1995
Number of Employees	Approx. 440
Foreign Partner	ZF (China) Investment Co., Ltd. 76%
Local Partner	Shanghai Motor Vehicle & Autoparts Co., Ltd. 24%

业务范围
主要生产乘用车底盘用转向横拉杆、控制臂、球铰链、稳定连接杆、转向节及后桥转向节等零部件，并提供相关的技术服务和咨询。

Business Scope
Production of passenger car chassis components, such as tie rods, control arms, suspension ball joints, stabilizer links, knuckle & wheel carrier and provide relevant technology service and consultation.



上海汇众萨克斯减振器有限公司

Shanghai Sachs Huizhong Shock Absorber Co., Ltd.

地址 / 邮编	上海市莘庄工业区申旺路280号 / 201108
电话 / 传真	+86 21 5179 5188 / +86 21 5442 2102
形式	合资企业
成立日期	2000年3月16日
员工人数	约490
外方	采埃孚 (中国) 投资有限公司 60%
中方	上海汇众汽车制造有限公司 40%

Address	No. 280 Shenwang Road, Xinzhuang Industrial Park, Shanghai, P. R. China, 201108
Tel / Fax	+86 21 5179 5188 / +86 21 5442 2102
Legal Form	Joint Venture
Foundation Date	Mar. 16, 2000
Number of Employees	Approx. 490
Foreign Partner	ZF (China) Investment Co., Ltd. 60%
Local Partner	Shanghai Huizhong Automotive Manufacturing Co., Ltd. 40%

业务范围

设计、生产乘用车和轻型商用车减振器、麦弗逊支柱、悬架模块，销售自产产品。

Business Scope

Development, production and sales of shock absorbers, besser: McPherson struts and suspension modules and suspension struts for passenger cars and light commercial vehicles.



上海汇众萨克斯减振器有限公司沈阳分公司

Shanghai Sachs Huizhong Shock Absorber Co., Ltd. Shenyang Branch

地址 / 邮编	沈阳市大东区轩盛三路2号 / 110045
电话 / 传真	+86 24 3153 2818 / +86 24 3153 2844
形式	合资企业
成立日期	2014年11月3日
员工人数	约120
外方	采埃孚 (中国) 投资有限公司 60%
中方	上海汇众汽车制造有限公司 40%

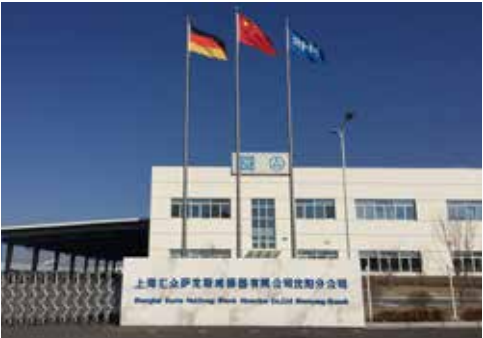
Address	No. 2 Xuanshengsan Road, Dadong District, Shenyang, Liaoning Province, P. R. China, 110045
Tel / Fax	+86 24 3153 2818 / +86 24 3153 2844
Legal Form	Joint Venture
Foundation Date	Nov 3, 2014
Number of Employees	Approx. 120
Foreign Partner	ZF (China) Investment Co., Ltd. 60%
Local Partner	Shanghai Huizhong Automotive Manufacturing Co., Ltd. 40%

业务范围

设计、生产乘用车和轻型商用车减振器、麦弗逊支柱、悬架模块，销售自产产品。

Business Scope

Development, production and sales of shock absorbers, McPherson struts and suspension modules for passenger cars and light commercial vehicles.



采埃孚汽车底盘系统（北京）有限公司
ZF Chassis Systems (Beijing) Co., Ltd.

地址 / 邮编	北京市经济技术开发区兴海一街1号 / 100176
电话 / 传真	+86 10 6751 8981 (8982) / +86 10 6751 8940 (8941)
形式	外商独资企业
成立日期	2012年9月13日
员工人数	约801
Address	No. 1 Xinghai 1 st Street, Economic-Technological Development Area, Beijing, P. R. China, 100176
Tel / Fax	+86 10 6751 8981 (8982) / +86 10 6751 8940 (8941)
Legal Form	Wholly Foreign Owned Enterprise
Foundation Date	Sep. 13, 2012
Number of Employees	Approx. 801

业务范围
汽车底盘零配件的进口和提供；汽车底盘零配件和汽车车桥系统的装配，以及销售和交付自产产品。

Business Scope
Import and sourcing of car chassis components & parts, assembly of car chassis components and axle systems, as well as sale and delivery of the assembled products.

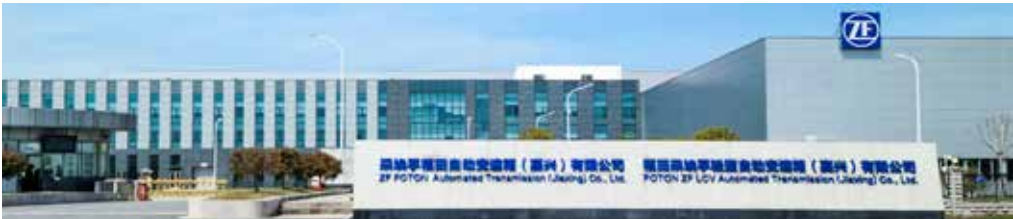


采埃孚福田自动变速箱（嘉兴）有限公司
ZF Foton Automated Transmission (Jiaxing) Co., Ltd.

地址 / 邮编	浙江省嘉兴市经济技术开发区桐乡大道桐乡大道2929号-2
电话 / 传真	+86 573 8985 0495
形式	合资企业
成立日期	2017年4月18日
外方	采埃孚（中国）投资有限公司 51%
中方	北汽福田汽车股份有限公司 49%
Address	No.2929-2, Tongxiang Avenue, Economic and Technological Development Zone, Jiaxing, Zhejiang Province, P.R. China
Tel / Fax	+86 573 8985 0495
Legal Form	Joint Venture
Foundation Date	Apr. 18, 2017
Foreign Partner	ZF (China) Investment Co., Ltd. 51%
Local Partner	Beiqi Foton Motor Co., Ltd. 49%

业务范围
重型商用车变速箱、缓速器及其零部件的制造组装、功能性测试、应用开发、采购、销售以及售后；重型商用车变速箱、缓速器及其零部件、汽车零部件、机械设备的批发、佣金代理；以服务外包方式从事企业生产线管理；变速箱、缓速器及其零部件的制造组装、测试、应用开发领域的技术咨询、技术服务；非证书的职业技能培训；货物及技术进出口。

Business Scope
Manufacturing, assembly, functional testing, application engineering, purchasing, sales and aftersales of transmissions, retarders and their respective parts for heavy duty commercial vehicles; wholesale and commission agency of transmissions, retarders and their respective parts for heavy duty commercial vehicles, automotive parts, and mechanical equipment; providing enterprise production line management by means of service outsourcing; providing technical advice and services in terms of manufacturing, assembly, testing, and application engineering of transmissions, retarders and their respective parts; providing non-certification training of professional skills; and import and export of goods and technology.



采埃孚商用车技术（嘉兴）有限公司

ZF Commercial Vehicle Technology (Jiaxing) Co., Ltd.

地址 / 邮编	浙江省嘉兴市经济技术开发区万国路368号/314000
电话 / 传真	0573-83705555
形式	外商独资企业
成立日期	2020年4月28日
员工人数	约122
Address	No.368 Wanguo Road, EDZ, Jiaxing, Zhejiang Province, P.R.China
Tel / Fax	0573-83705555
Legal Form	Wholly Foreign Owned Enterprise
Foundation Date	Apr. 28, 2020
Number of Employees	Appr. 122

业务范围
商用车解决方案事业部中国区部分总部职能；卡车变速箱第三方销售

Business Scope
Commercial Vehicle Solutions China Home Base;
TT (Truck & Van Driveline Technology) 3rd party sales



采埃孚传动技术（嘉兴）有限公司

ZF Drivotech (Jiaxing) Co., Ltd.

地址 / 邮编	浙江省嘉兴市经济技术开发区万国路368号/314000
电话 / 传真	0573-83705555
形式	外商独资企业
成立日期	2020年4月28日
员工人数	约356
Address	No.368 Wanguo Road, EDZ, Jiaxing, Zhejiang Province, P.R.China
Tel / Fax	0573-83705555
Legal Form	Wholly Foreign Owned Enterprise
Foundation Date	Apr. 28, 2020
Number of Employees	Approx. 356

业务范围
商用车车桥，商用车转向技术，商用车动力模块技术的核心零部件生产，产成品组装，应用与研发工程及售后技术服务。

Business Scope
Core component machining, finished products assembly, integrated application and R&D engineering, after-sales technical service for CV Axles, CV Steering Systems and CV Powertrain Modules.



采埃孚商用车底盘技术（上海）有限公司

ZF Chassistech Commercial Vehicles (Shanghai) Co., Ltd.

地址 / 邮编	上海市闵行区元江路4440号 / 201111
电话 / 传真	+86 21 2416 9544 / +86 21 2416 9401
形式	外商独资企业
成立日期	2003年4月7日
员工人数	约100
Address	No. 4440, Yuanjiang Rd, Minhang district, shanghai, P.R. China, 201111
Tel / Fax	+86 21 2416 9544 / +86 21 2416 9401
Legal Form	Wholly Foreign Owned Enterprise
Foundation Date	Apr. 7, 2003
Number of Employees	Approx. 100

业务范围
设计，开发，生产和销售商用车底盘包括空簧在内的各类悬架系统，模块和零件，商用车转向系统零件，卡车驾驶室悬置系统及零件。主要产品为空悬系统，驾驶室悬置系统, 各类推力杆，稳定杆连杆，独立悬挂球铰链，控制臂，各类转向拉杆，免维护转向球铰链等。

Business Scope
Design, development, production and sales of various chassis suspension systems (including air suspension system), module and component for commercial vehicles; component of steering system for commercial vehicles; truck cabin suspension system and component. Main products include air suspension system, cabin suspension system, torque rod, V-link, stabilizer link, independent suspension ball joint, control arm, steering rod and maintenance-free ball joint etc.



采埃孚汽车零部件系统（上海）有限公司

ZF Automotive Components & Systems (Shanghai) Co., Ltd.

地址 / 邮编	上海市闵行区元江路4440号 / 201111
电话 / 传真	+86 21 2416 9544 / +86 21 2416 9401
形式	外商独资企业
成立日期	1998年4月29日
员工人数	约250
Address	No. 4440, Yuanjiang Road, Minhang District, Shanghai, P. R. China, 201111
Tel / Fax	+86 21 2416 9544 / +86 21 2416 9401
Legal Form	Wholly Foreign Owned Enterprise
Foundation Date	Apr. 29, 1998
Number of Employees	Approx. 250

业务范围
研发、生产、销售和维修商用车减振器及总成；研发、生产、销售和维修铁路减振器，以及研发、生产和销售铁路减振器示功机。

Business Scope
Development, manufacture, sales, overhauling of dampers, damping modules for commercial vehicles; development, manufacture, sales, overhauling of railway dampers; development, manufacture,sales of testing machine for railway dampers.



十堰东风采埃孚减振器有限公司

ZF Dongfeng Shock Absorber Shiyan Co., Ltd.

地址 / 邮编 湖北省十堰市白浪东路49号 / 442013
 电话 / 传真 +86 719 825 7006 / +86 719 828 7371
 形式 合资企业
 成立日期 2005年6月9日
 员工人数 约200
 外方 采埃孚 (中国) 投资有限公司 51%
 中方 东实汽车科技集团股份有限公司 49%

Address No. 49 East Bailang Road, Shiyan, Hubei Province, P. R. China, 442013
 Tel / Fax +86 719 825 7006 / +86 719 828 7371
 Legal Form Joint Venture
 Foundation Date Jun. 9, 2005
 Number of Employees Approx. 200
 Foreign Partner ZF (China) Investment Co., Ltd. 51%
 Local Partner Dongshi Motor Technology Group Co., Ltd. 49%



业务范围

商用车减振器、转向连接件、驾驶室悬置及底盘零部件、底盘系统的设计、制造、销售和售后服务。

Business Scope

Design, manufacture, sales and after-sales service of commercial vehicle shock absorbers, steering connections, cab suspension and chassis components, chassis systems.

天合富奥商用车转向器（长春）有限公司

TRW Fawer Commercial Vehicle Steering (Changchun) Co., Ltd.

地址 / 邮编 吉林省长春市东南湖大路4789号 / 130033
 电话 / 传真 + 86 431 8705 3571 / + 86 431 8705 3598
 形式 合资企业
 成立日期 2004年3月15日
 员工人数 约200
 外方 采埃孚亚太集团有限公司 55%
 中方 富奥汽车零部件股份有限公司 45%

Address No. 4789 East Nanhu Road, Changchun, Jilin Province, P. R. China, 130033
 Tel / Fax + 86 431 8705 3571 / + 86 431 8705 3598
 Legal Form Joint Venture
 Foundation Date Mar. 15, 2004
 Number of Employees Approx. 200
 Foreign Partner ZF Asia Pacific Group Co., Ltd. 55%
 Local Partner Fawer Automotive Parts Limited Company 45%



业务范围

开发、生产和销售商用车转向器；产品的售后服务。

Business Scope

Develop, produce and sale commercial steering gear; provide product after-sale service.

采埃孚（上海）管理有限公司
ZF (Shanghai) Management Co., Ltd.

地址 / 邮编	上海市新漕河泾国际商务中心B座29楼、30楼 / 200233
电话 / 传真	+86 21 3338 2000 / +86 21 6113 8227
形式	外商独资企业
成立日期	2003年3月27日
员工人数	约140
Address	29F & 30F, Building B, New Caohejing International Business Center, Shanghai, P. R. China, 200233
Tel / Fax	+86 21 3338 2000 / +86 21 6113 8227
Legal Form	Wholly Foreign Owned Enterprise
Foundation Date	Mar. 27, 2003
Number of Employees	Approx. 140

业务范围
从事汽车控制系统和相关产品及其零部件的技术支持、研究开发、销售、进出口及相关配套服务。

Business Scope
Engaged in technical support, R&D, sales, import & export and other services for automotive vehicle control systems and related products, compotents.



采埃孚商用车系统（济南）有限公司
ZF Commercial Vehicle Systems (Jinan) Co., Ltd.

地址 / 邮编	山东省济南市高新技术产业开发区世纪大道1001号 / 250104
电话 / 传真	+86 531 6232 8800 / +86 531 6232 8788
形式	外商独资企业
成立日期	1995年12月25日
员工人数	约145
Address	1001 Shiji Avenue, Jinan High-Tech Industrial Development Zone, Jinan, Shandong, P. R. China, 250104
Tel / Fax	+86 531 6232 8800 / +86 531 6232 8788
Legal Form	Wholly Foreign Owned Enterprise
Foundation Date	Dec.25, 1995
Number of Employees	Approx. 145

业务范围
生产销售汽车ABS防抱死系统，空气悬挂系统，空气干燥器等汽车制动系统及零部件，并提供售后服务，提供产品生产、销售和市场开发过程中的技术服务；市场营销策划。

Business Scope
Production and sales of automobile brake systems and components such as ABS , air suspension systems, air dryers, etc., and after-sales service, providing technical services during production, sales and market development; marketing planning.



采埃孚商用车系统（青岛）有限公司
ZF Commercial Vehicle Systems (Qingdao) Co.,Ltd.

地址 / 邮编	青岛经济技术开发区渭南路917号 / 266510
电话 / 传真	+86 532 8686 1000 / +86 532 8683 7899
形式	外商独资企业
成立日期	2004年8月10日
员工人数	约585
Address	No. 917 Weihei Road Economic Development Zone, Qingdao, P. R. China, 266510
Tel / Fax	+86 532 86861000 / +86 532 8683 7899
Legal Form	Wholly Foreign Owned Enterprise
Foundation Date	Aug 10, 2004
Number of Employees	Approx. 585



采埃孚商用车系统（青岛）有限公司济南分公司
ZF Commercial Vehicle Systems (Qingdao) Co., Ltd. Jinan Branch

地址 / 邮编	山东省济南市高新技术产业开发区世纪大道1001号 / 250104
电话 / 传真	+86 531 6232 8800 / +86 531 6232 8788
形式	外商独资企业
成立日期	2010年3月12日
员工人数	约450
Address	1001 Shiji Avenue, Jinan High-Tech Industrial Development Zone, Jinan, Shandong, P. R. China, 250104
Tel / Fax	+86 531 6232 8800 / +86 531 6232 8788
Legal Form	Wholly Foreign Owned Enterprise
Foundation Date	Mar. 12, 2010
Number of Employees	Approx. 450

业务范围
设计、生产、组装、加工、进出口、分销（批发、佣金代理）威伯科集团公司的各种汽车控制系统和相关产品及其零部件，并提供与上述产品有关的技术支持和售后服务。（依法须经批准的项目，经相关部门批准后方可开展经营活动）。

Business Scope
Design, produce, assembly, processing, import and export, distribution (wholesale, commission agency) various automotive control systems and related products and their parts of WABCO Group , and provide technical support and after-sales service related to the above products. (Projects that require approval in accordance with the law, can only start business activities after approval by the relevant departments).



业务范围
主要从事商用车ABS/EBS/ESC控制系统、空气悬架控制系统、盘式制动器和 i-AMT换挡机构等部件；乘用车空气悬架系统和制动真空泵的制造和销售，及提供技术支持和售后服务。

Business Scope
Engaged in the production and sales of CV braking control systems ABS/EBS/ESC, ECAS control system, ADB & i-AMT SCU; Car ASU system & braking vacuum pump for OEM and AM, providing technical services and after-sales services.

广东威伯科汽车制动系统有限公司

Guangdong WABCO Vehicle Brakes Co., Ltd.

地址 / 邮编	广东省台山市水步镇三台大道北一号（富华重工12号车间） / 529200
电话 / 传真	+86 750 5966 135
形式	外商独资企业
成立日期	2009年3月25日
员工人数	约50
Address	Building 12, No. 1 North San Tai Avenue, Shuibu Town, Taishan City, Guang Dong Province,P.R.China, 529200
Tel / Fax	+86 750 5966 135
Legal Form	Wholly Foreign Owned Enterprise
Foundation Date	Mar.25, 2009
Number of Employees	Approx. 50

业务范围
生产经营盘式制动器总成及相关零部件，MAXXT(TM)22盘式制动器总成及相关零部件，自动调整臂总成及其相关零部件和刹车盘，并提供相关服务。

Business Scope
Engaged in the production and sales of ADB and its related components, MAXX22T and its related components, automatic slack adjuster, rotor and other products.



长春威伯科汽车控制系统有限公司

Changchun WABCO Vehicle Control System Co.,Ltd.

地址 / 邮编	长春汽车经济技术开发区 长沈路7377号 / 130000
电话 / 传真	+86 431 8597 7701
形式	合资企业
成立日期	2018年12月27日
员工人数	约20
外方	威伯科香港 60%
中方	一汽解放汽车有限公司 40%



Address	No. 7377 Changshen Road, Auto Economy & Technology Development Zone, Changchun, P. R. China, 130000
Tel / Fax	+86 431 8597 7701
Legal Form	Joint Venture
Foundation Date	Dec.27, 2018
Number of Employees	Approx. 20
Foreign Partner	WABCO Hongkong Ltd. 60%
Local Partner	FAW Jiefang Automotive Co.,Ltd 40%

业务范围
研发、生产、销售盘式制动器、制动盘、制动气室、电子制动控制系统（EBS）、电子稳定性控制系统（ESC）、先进辅助驾驶系统等车辆控制系统产品，并提供相应的技术服务和工程技术支持，以及从事与车辆控制系统相关的其他业务活动。

Business Scope
The research and development, production and sales of air disc brakes, rotors, actuators, electronic braking system, electronic stability control, advanced driver assistance system and other vehicle control system products, provision of the appropriate after-sales services, engineering technical support, and other business activities related to the vehicle control systems products.

威伯科物流（青岛）有限公司

WABCO Logistics (Qingdao) Co., Ltd.

地址 / 邮编	中国（山东）自由贸易试验区青岛片区西海岸综合保税区内（红石崖十一号线以西，十四号线以北）1215室
电话 / 传真	+86 532 8686 1000
形式	外商独资企业
成立日期	2005年4月18日
员工人数	约2
Address	Address: Room 1215, West Coast Comprehensive Bonded Zone (West of Hongshiya Line 11, North of Line 14), China (Shandong) Pilot Free Trade Zone Qingdao Area
Tel / Fax	+86 532 8686 1000
Legal Form	Wholly Foreign Owned Enterprise
Foundation Date	Apr.18, 2005
Number of Employees	Approx. 2

业务范围
物流分拨（不含运输）；各种汽车控制系统和部件的进出口、批发、佣金代理（不含拍卖）及其他相关配套业务；国际贸易、转口贸易、区内企业之间贸易及贸易项下加工整理、组装、包装、存库；咨询、技术支持及售后服务。

Business Scope
Logistics distribution (excluding transportation); import and export, wholesale, commission agency (excluding auctions) and other related supporting services of various automotive control systems and components; international trade, entrepot trade, intra-regional trade and trade items processing, assembly, packaging, storage; consulting, technical support and after-sales service.

上海采埃孚变速器有限公司

ZF Transmissions Shanghai Co., Ltd.

地址 / 邮编	上海市嘉定区汇旺路649号 / 201807
电话 / 传真	+86 21 6708 9888 / +86 21 6708 9870
形式	合资企业
成立日期	2004年6月9日
员工人数	约295
外方	采埃孚（中国）投资有限公司 51%
中方	上海汽车变速器有限公司 49%
Address	No. 649 Huiwang Road, Jiading District, Shanghai, P. R. China, 201807
Tel / Fax	+86 21 6708 9888 / +86 21 6708 9870
Legal Form	Joint Venture
Foundation Date	Jun. 9, 2004
Number of Employees	Approx. 295
Foreign Partner	ZF (China) Investment Co., Ltd. 51%
Local Partner	Shanghai Automobile Gear Works 49%

业务范围
乘用车的自动变速器和相关产品及其零部件的生产、组装、测试、应用工程和销售。

Business Scope
Production, assembly, testing, application engineering and sales of the automatic transmissions and related products and components for passenger cars.



采埃孚传动系统零部件（上海）有限公司

ZF Powertrain Modules Shanghai Co., Ltd.

地址 / 邮编	上海市青浦区华志路1139号 / 201708
电话 / 传真	+86 21 6700 2410 / +86 21 6700 2486
形式	外商独资企业
成立日期	2014年11月12日
员工人数	约120
Address	No. 1139 Huazhi Road, Qingpu District, Shanghai, P. R. China, 201708
Tel / Fax	+86 21 6700 2410 / +86 21 6700 2486
Legal Form	Wholly Foreign Owned Enterprise
Foundation Date	Nov. 12, 2014
Number of Employees	Approx. 120

业务范围
乘用车双质量飞轮(DMF)、电驱系统下的自动式手动变速器(e-AMT)以及线控离合器(CBW)的研发、生产及销售业务。

Business Scope
Development, production and sales of Dual Mass Flywheel (DMF), Electronic Automated Manual Transmission (e-AMT) and Clutch by Wire (CBW).



采埃孚销售服务（中国）有限公司

ZF Services (China) Co., Ltd.

地址 / 邮编	上海徐汇区罗秀路162号 / 200231
电话 / 传真	+86 21 2350 0600 / +86 21 2350 0601
形式	外商独资企业
成立日期	2001年3月5日
员工人数	约218
北京分公司	北京市北京经济技术开发区泰河一街2号院5号楼一层101 / 100176
重庆分公司	重庆市高南岸区江溪路33号1号楼 / 401336
广州分公司	广州市南沙区黄阁镇留新路留东村工业园10# 厂房二层 / 511455

Address	No. 162 Luoxiu Road, Xuhui District, Shanghai, P. R. China, 200231
Tel / Fax	+86 21 2350 0600 / +86 21 2350 0601
Legal Form	Wholly Foreign Owned Enterprise
Foundation Date	Mar. 5, 2001
Number of Employees	Approx. 218
Beijing Branch	Room101, Building5, No. 2 Taihe Yi Jie, Beijing Economic-Technological Development Area, Beijing, P.R.China, 100176
Chongqing Branch	Building 1#, No. 33 Jiangxi Road, Nan An District, Chongqing, P.R. China, 401336
Guangzhou Branch	2 nd Floor, Building 10#, Liudong Village Industrial Park, Liuxin Road, Huangge Town, Nansha District, Guangzhou, P.R. China, 511455

业务范围
采埃孚销售服务（中国）有限公司是采埃孚售后事业部在中国的分支机构，负责开发和管理采埃孚在中国售后市场的业务，依托采埃孚集团全面的产品组合及完善的解决方案，同时配合采埃孚强大的售后品牌——伦福德 (LEMFÖRDER)、萨克斯 (SACHS)、天合 (TRW) 以及威伯科 (WABCO) 提供的多样化产品，为用户提供全系列的高品质配件及相关服务。此外，公司以上海为总部，在香港、北京、重庆及广州设有分公司，同时负责船舶推进系统的原厂配套和售后服务业务，以及特种传动产品的原厂配套业务。

Business Scope
ZF Services (China) Co., Ltd. is one of the subsidiaries of ZF Aftermarket, and is responsible for developing and expanding the aftermarket business with its sales and services network in China. With the comprehensive ZF product portfolio and integrated solutions, as well as the strong and reputable product brands: LEMFÖRDER, SACHS, TRW and WABCO, the company provides the full scale of products and high quality services for our customers. Furthermore, with the headquarter located in Shanghai, and other sub-branches in Hong Kong, Beijing, Chongqing and Guangzhou, ZF Services (China) Co., Ltd. is also in charge of the OE-Business and aftersales service for Marine propulsion systems & OE-business for special driveline products.



采埃孚香港有限公司

ZF Services Hong Kong Limited

地址 香港新界荃湾沙咀道29-35号科技中心二楼
电话 / 传真 +852 2615 9353 / +852 2615 9689
形式 外商独资企业
成立日期 1999年1月27日
员工人数 约25

Address 2/F, Technology Plaza, No. 29-35 Sha Tsui Road, Tsuen Wan, New Territories, Hong Kong
Tel / Fax +852 2615 9353 / +852 2615 9689
Legal Form Wholly Foreign Owned Enterprise
Foundation Date Jan. 27, 1999
Number of Employees Approx. 25

业务范围
为香港和澳门提供采埃孚集团所有产品及汽件产品包括采埃孚 (ZF)、萨克斯 (SACHS)、博格 (BOGE)、伦福德 (LEMFÖRDER)、天合 (TRW)、威佰科 (WABCO) 品牌的配套销售以及应用 / 工程、物流服务、售后服务。

Business Scope
Provide OEM business support, aftermarket, application/technical support and logistics services & after-sales services for all ZF products in Hong Kong and Macau. Responsible for aftermarket sales of spare parts under the brands of ZF, SACHS, BOGE, LEMFÖRDER , TRW and WABCO in Hong Kong and Macau.



青岛天摩亚太汽车部件有限公司

Qingdao FMG Asia Pacific Co., Ltd.

地址 / 邮编 青岛市高新区锦业路1号蓝贝创新园C1、C2厂房 / 266108
电话 / 传真 +86 532 5889 5757 / +86 532 5889 5758
形式 外商独资企业
成立日期 2011年6月14日
员工人数 约200

Address C1 and C2 Plant, Lanebest Inovation Park, No.1 JinYE Road, Qingdao National high-tech Industrial Development Zone, Qingdao, P. R. 266108
Tel / Fax +86 532 5889 5757 / +86 532 5889 5758
Legal Form Wholly Foreign Owned Enterprise
Foundation Date Jun. 14, 2011
Number of Employees Approx. 200



业务范围
机动车刹车片和其他汽车部件的制造、仓储和销售，以及相关设备、产品和技术的进出口。

Business Scope
Motor vehicle brake pads manufacturing, warehousing and sales as well as import and export of related equipment, products and technology.

采埃孚汽车科技（上海）有限公司 — 安亭技术中心
ZF Automotive Technologies (Shanghai) Co., Ltd.
- Anting Technical Center

地址 / 邮编 上海市泰波路366号 / 201814
电话 / 传真 +86 21 6016 5000 / +86 21 6016 4848
形式 外商独资企业
成立日期 2004年7月21日
员工人数 约1400

Address No. 366 Taibo Road, Shanghai, P. R. China, 201814
Tel / Fax +86 21 6016 5000 / +86 21 6016 4848
Legal Form Wholly Foreign Owned Enterprise
Foundation Date Jul. 21, 2004
Number of Employees Approx. 1,400



业务范围
研究和开发相关汽车零配件和系统；提供国内外相关
技术咨询和技术支持服务及设计、开发和测试服务。

Business Scope
Develope relevant components and systems
for automobile; provide relevant technology
consulting, technology supporting service, design,
development and testing service for domestic and
overseas' customers.

采埃孚（广州）科技有限公司
ZF (Guangzhou) Technologies Co.,Ltd

地址 / 邮编 中国广州市花都区新雅街永利路7号 / 510800
 中国广州市花都区新华街迎宾大道163号高晟广场2栋6楼（租赁办公室） /
 510800
形式 外商独资企业
成立日期 2020年5月19日
员工人数 约115

Address No.7 Yongli Rd, Huadu District, Guangzhou, China / 510800
 F3A, F6 Gaosheng Plaza, 163 Yingbin Road, Xinhua Street, Huadu District,
 Guangzhou, China / 510800
Legal Form Wholly Foreign Owned Enterprise
Foundation Date May. 19, 2020
Number of Employees Approx. 115



业务范围
产品设计和开发，软件开发，系统集成，技术咨
询和解决方案。

Business Scope
Product design and development, Proposal of
SW development, System integration, Technical
solutions for product lines of the ZF Group

卢卡斯伟利达廊重制动器有限公司
 LucasVarity Langzhong Brake Co., Ltd.

地址 / 邮编	河北省廊坊市开发区祥云路16号 / 065001
电话 / 传真	+86 316 6073 108
形式	合资企业
成立日期	1994年6月17日
员工人数	约260
外方	卢卡斯工业有限公司 70%
中方	廊坊市国有资产经营有限公司 30%
Address	No. 16 Xiangyun Road, Development Zone, Langfang, Hebei Province, P. R. China, 065001
Tel / Fax	+86 316 6073 108
Legal Form	Joint Venture
Foundation Date	Jun. 17, 1994
Number of Employees	Approx. 260
Foreign Partner	Lucas Industries Limited 70%
Local Partner	Langfang State Owned Asset Management Co., Ltd. 30%



业务范围
 生产和销售汽车制动器及相关产品。

Business Scope
 Produce and sales of brake and relevant products.

南方天合底盘系统有限公司
 CSG TRW Chassis Systems Co., Ltd.

地址 / 邮编	重庆市璧山区红宇大道7号 / 402760
电话 / 传真	+86 23 4558 7510 / +86 23 4558 7556
形式	合资企业
成立日期	2005年6月15日
员工人数	约900
外方	TRW Automotive China Holdings Ltd. 50%
中方	中国长安汽车集团股份有限公司 50%
南京分公司	江苏省南京市溧水经济开发区中兴西路9号 / 211200
Address	No. 7 Hong Yu Road, Bishan County, Chongqing, P. R. China, 402760
Tel / Fax	+86 23 4558 7510 / +86 23 4558 7556
Legal Form	Joint Venture
Foundation Date	Jun. 15, 2005
Number of Employees	Approx. 900
Foreign Partner	TRW Automotive China Holdings Ltd. 50%
Local Partner	China Chang'an Automobile Group Co., Ltd. 50%
Nanjing Branch	No. 9 Zhongxing West Road, Lishui Economical Zone, Nanjing, Jiangsu Province, P. R. China, 211200



业务范围
 研发、制造、销售汽车底盘系统、制动器总成、总泵带真空助力器总成、动力转向器及其关联产品（含上述产品的零部件）；产品的售后服务。

Business Scope
 Research, manufacture, sales of automotive chassis system, brake assembly, master cylinder with vacuum booster assembly, power steering gear and related products (including components of products mentioned above), product after-sale service.

采埃孚汽车系统（上海）有限公司
ZF Automotive Systems (Shanghai) Co.,Ltd.

地址 / 邮编 上海市嘉定区安亭镇百安路188号 / 201814
电话 / 传真 + 86 21 3957 5000 / + 86 21 5950 2567
形式 外商独资企业
成立日期 2002年10月17日
员工人数 约1300



Address No. 188 Bai An Road, Anting Town,
 Jiading District, Shanghai, P. R. China, 201814
Tel / Fax + 86 21 3957 5000 / + 86 21 5950 2567
Legal Form Wholly Foreign Owned Enterprise
Foundation Date Oct. 17, 2002
Number of Employees Approx. 1,300

业务范围
开发、生产和装配汽车底盘系统以及相关产品（包括底盘电子动力液压转向系统等）、制动系统以及相关产品（包括汽车稳定控制系统的防抱死系统等）、转向系统以及相关产品、乘员安全系统以及相关产品（包括安全气囊的安全电子控制模块等）、动力传动系统以及相关产品、射频电子产品、驾驶员辅助电子系统以及相关产品，销售本公司自产产品及提供售后服务；上述产品同类产品的批发、佣金代理（拍卖除外）、进出口并提供相关配套服务。

Business Scope
Develop, produce and assemble automotive Chassis Systems and related products (including Electronic Hydraulic Steering Systems etc.), Brake Systems and related products (including ABS & ESC etc.), Steering Systems and related products, Occupant Safety Systems and related products (including Safety Electronic Control Modules for Airbags etc.), Power Transmission Systems and related products, Radio Frequency Electronic products, DAS and related products; Sales of those products including components of products mentioned above, provide after-sales services as well as wholesale, commission agency (except auctions) and import & export for the similar products mentioned above and provide related supporting services.

采埃孚汽车系统（武汉）有限公司
ZF Automotive System (Wuhan) Co., Ltd.

地址 / 邮编 湖北省武汉市经济技术开发区全力北路169号D/E厂房 / 430058
电话 +86 027 4936 5153
形式 外商独资企业
成立日期 2020年9月30日
员工人数 约1000

Address D/E Building, No.169, North Quanli Road, Economic &Technology Development
 Zone of Wuhan, Hubei Province, China, 430058
Tel +86 027 4936 5153
Legal Form Wholly Foreign Owned Enterprise
Foundation Date Sep. 30, 2020
Number of Employees Approx. 1,000

业务范围
专业专注汽车制动系统及乘员安全系统制造技术，产品涵盖综合式机械驻车制动后卡钳/综合式电子驻车后制动/前制动卡钳/安全气囊/安全带，并提供相关产品售后服务。

Business Scope
Devoting in automotive braking system and occupant safety system manufacturing technology. Our products cover Integrated Mechanical Parking Brake/Integrated Electrical Parking Brake/Front Caliper /Airbag/Seat Belt, and provide after-sales service for related products.



采埃孚汽车科技（张家港）有限公司

ZF Automotive Technologies (Zhangjiagang) Co., Ltd.

地址 / 邮编

江苏省张家港市港城大道1089号 / 215600

电话

+86 512 8883 8888

形式

外商独资企业

成立日期

2014年3月7日

员工人数

约3000

Address

No. 1089 Gangcheng Avenue, Zhangjiagang, Jiangsu Province, P. R. China, 215600

Tel

+86 512 8883 8888

Legal Form

Wholly Foreign Owned Enterprise

Foundation Date

Mar. 7, 2014

Number of Employees

Approx. 3,000



业务范围

研发、生产和装配汽车底盘电子控制系统及关键零部件、线控转向系统、吸能式转向系统、其它转向系统及部件、电子控制悬挂系统、空气悬架、前后悬架系统及其部件、电路制动系统(BBW) ABS/TCS/ESP系统、汽车稳定控制系统的防抱死系统等制动系统以及相关产品、汽车安全气囊用气体发生器、安全气囊的安全电子控制模块、其它汽车气囊系统和汽车乘员安全系统以及相关产品、汽车座椅安全带和方向盘及其零部件、动力传动系统以及相关产品、汽车变速器泵以及相关产品，销售本公司自产产品及提供售后服务;上述同类商品的批发、佣金代理(拍卖除外)、进出口并提供相关配套服务;汽车零部件检测服务;记账服务、会计咨询、以及承接其母公司和关联公司的服务外包业务(不涉及国营贸易管理商品，涉及配额、许可证管理商品的，按国家有关规定办理申请)。医用口罩生产;医用口罩批发;日用口罩(非医用)生产;日用口罩(非医用)销售;劳动保护用品生产;劳动保护用品销售(依法须经批准的项目，经相关部门批准后方可开展经营活动)

Business Scope

Development, production and assembly of automotive chassis electronic control systems and key components, wire steering systems, energy-absorbing steering systems, other steering systems and components, electronic control suspension systems, air suspension systems, front and rear suspension systems and their components, Brake By Wire System (BBW) Brake systems such as Antilock brake System/Traction Control System/Electronic Stability Program system, anti-lock systems for automotive stability control systems and related products, gas generators for automotive airbags, safety electronic control modules for airbags, other automotive airbags systems and passenger safety systems and related products, annual seat belts and steering wheels and their components, power transmission systems and related products, automotive gear pumps and related products, selling our own products and providing after-sales service;

Wholesale, commission agent (except auction), import and export of the same kind of goods mentioned above, and provide related supporting services; auto parts testing services; accounting services, accounting consulting, and undertaking the outsourcing of services of its parent company and affiliated companies (those that do not involve state-owned trade management commodities quota and license management commodities, shall apply according to the relevant regulations of the state). Medical mask production; medical mask wholesale; daily mask (non-medical) production; daily mask (non-medical) sales; labor protection supplies production; labor protection supplies sales (Projects that require approval by law, business activities can only be carried out with the approval of relevant departments).

采埃孚汽车科技（上海）有限公司

ZF Automotive Technologies (Shanghai) Co., Ltd.

地址 / 邮编

上海市嘉定区安亭镇众百路289号 / 201814

电话 / 传真

+86 21 6707 5725

形式

外商独资企业

成立日期

2011年8月1日

员工人数

约850

Address

No. 289 Zhongbai Road, Anting Town, Shanghai, P. R. China, 201814

Tel / Fax

+86 21 6707 5725

Legal Form

Wholly Foreign Owned Enterprise

Foundation Date

Aug. 1, 2011

Number of Employees

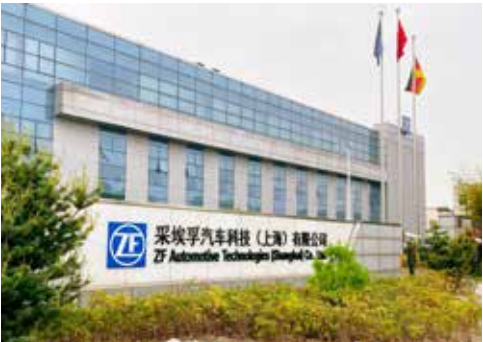
Approx. 850

业务范围

为国内外整车厂提供电动助力转向系统，分别有管柱式传动电动助力转向系统和皮带式传动电动助力转向系统。

Business Scope

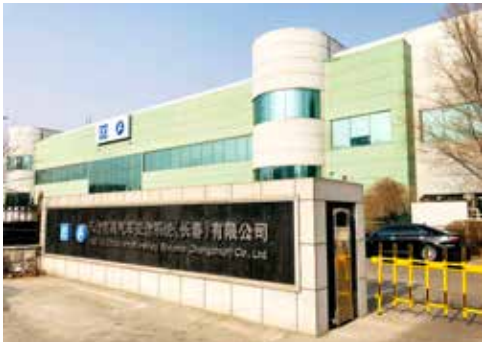
Develop the manufacturing and assembly of Electric Power Assisted Steering Systems and components for passenger vehicles serving Chinese OEM and export markets of western OEM. Focus on two product lines. Column Drive and Belt Drive System.



天合富奥汽车安全系统（长春）有限公司

TRW Fawer Automobile Safety Systems (Changchun) Co., Ltd.

地址 / 邮编	吉林省长春市高新技术开发区硅谷大街4579号 / 130012
电话	+86 431 8554 2609
形式	合资企业
成立日期	1995年11月1日
员工人数	约1800
外方	TRW Automotive China Holdings Ltd. 60%
中方	富奥汽车零部件股份有限公司 40%
成都分公司	四川省成都市龙泉驿区经开南二路268号 / 610100
佛山分公司	广东省佛山市三水乐平中心工业园区B区86号 / 528137
Address	No. 4579 Guigu Street, High-Tech Development Zone, Changchun, Jilin Province, P. R. China, 130012
Tel	+86 431 8554 2609
Legal Form	Joint Venture
Foundation Date	Nov. 1, 1995
Number of Employees	Approx. 1,800
Foreign Partner	TRW Automotive China Holdings Ltd. 60%
Local Partner	Fawer Automotive Parts Limited Company 40%
Chengdu Branch	No. 268 No. 2 Road, Economy Development Zone, Chengdu, Sichuan Province, P. R. China, 610100
Foshan Branch	No. 86 B Section, Sanshui Center Science and Technology Industry Park, Foshan, Guangdong Province, P. R. China, 528137



业务范围
开发、生产汽车底盘系统及相关零部件、制动系统及相关零部件。设计、开发、制造汽车气囊系统，座椅安全带和方向盘及其零部件。

Business Scope
Develop, produce automobile chassis system and related parts, braking system and related parts.
Design, develop, produce automobile air bag system, seat belts, steering wheels and related parts.

采埃孚汽车被动安全系统（上海）有限公司

ZF Automotive Passive Safety Systems (Shanghai) Co., Ltd

地址 / 邮编	上海市园贸路290号 / 201805
电话 / 传真	+86 21 6142 2000 / +86 21 6142 2001
形式	外商独资企业
成立日期	1997年4月3日
员工人数	约350
Address	No. 290 Yuanmao Road, Shanghai, P. R. China, 201805
Tel / Fax	+86 21 6142 2000 / +86 21 6142 2001
Legal Form	Wholly Foreign Owned Enterprise
Foundation Date	Apr. 3, 1997
Number of Employees	Approx. 350



业务范围
生产汽车安全带、安全气囊、方向盘系统及相关零部件，销售自产产品。

Business Scope
Produce Seat Belt System, Inflatable Restraint System, Steering Wheel System and related parts.

采埃孚东方汽车安全技术（西安）有限公司

ZF Dongfang Automotive Safety Technology (Xi'an) Co., Ltd.

地址 / 邮编	陕西省西安市经济技术开发区泾渭新城渭华路北段3号 / 710201
电话 / 传真	+86 29 8605 7802 / +86 29 8605 7866
形式	合资企业
成立日期	2010年4月30日
员工人数	约300
外方	采埃孚亚太集团有限公司 90%
中方	西北工业集团 10%
Address	No. 3 North of Weihua Road, Jingwei Xin Cheng, Xi'an Economical & Technological Development Zone, Xi'an, Shaanxi Province, P. R. China, 710201
Tel / Fax	+86 29 8605 7802 / +86 29 8605 7866
Legal Form	Joint Venture
Foundation Date	Apr. 30, 2010
Number of Employees	Approx. 300
Foreign Partner	ZF Asia Pacific Group Co., Ltd. 90%
Local Partner	China Northwest Industry Group Co., Ltd. 10%



业务范围
汽车安全气囊用气体发生器、安全带预收紧器及相关产品的生产和销售。

Business Scope
Produce and sales of automotive airbag inflator, seat belt pretensioner and the relevant product.

采埃孚汽车安全系统（日照）有限公司

ZF Automotive Safety System (Rizhao) Co., Ltd.

地址 / 邮编	日照市上海路496号 / 276800
形式	外商独资企业
成立日期	2022年8月22日
员工人数	约550
Address	Shanghai Road 496#, Rizhao City, P. R. China, 276800
Legal Form	Wholly Foreign Owned Enterprise
Foundation Date	Aug 22, 2022
Number of Employees	Approx. 550

业务范围
采埃孚PSS日照项目，注册资本2000万欧元，总投资6000万欧元，厂区总面积14400平方米。采埃孚日照工厂是一家从事研发生产汽车安全气囊气袋和高档方向盘的专业汽车零部件企业。日照工厂于2022年8月启动，将于2026年达到设计产能，总销售收入超过16亿元。

Business Scope
ZF PSS Rizhao project, the registered capital of 20 million euros, a total investment of 60 million euros, and a total factory area of 14,400 square meters. ZF Rizhao factory is a professional enterprise that specializes in the research and production of automotive airbag cushions and high-tech steering wheels. Rizhao factory was launched in August 2022 and will reach its designed capacity by 2026, with a total sales revenue of over 1.6 billion yuan.



采埃孚汽车安全系统（武汉）有限公司
ZF Automotive Safety System (Wuhan) Co., Ltd.

地址 / 邮编	湖北省武汉经济技术开发区全力一路16号
形式	外商独资企业
成立日期	2023年第三季度
员工人数	约500
Address	No.16, Quanliyi Road, ETDZ of Wuhan, Hubei Province, P. R. China,
Legal Form	Wholly Foreign Owned Enterprise
Foundation Date	2023 Q3
Number of Employees	Approx. 500

业务范围
汽车被动安全产品的研发，安全带和安全气囊的制造及销售。

Business Scope
Research & development of automotive passive safety products, and manufacturing & sale of seat belts and airbags.



采埃孚汽车安全系统（威海）有限公司
ZF Automotive Safety Systems (Weihai) Co., Ltd.

地址 / 邮编	山东省威海市临港经济技术开发区草庙子镇开元东路南侧金华北路西侧中欧先进智造产业园1号
形式	外商独资企业
成立日期	2023年6月15日
员工人数	约39
Address	No. 1, China-Europe Advanced Intelligent Manufacturing Industrial Park, south of Kaiyuan East Road, west of Jinhua North Road, Caomiaozi Town, International Port Economic & Technological Development Zone, Weihai City, Shandong Province
Legal Form	Wholly Foreign Owned Enterprise
Foundation Date	Jun 15, 2023
Number of Employees	Approx. 39

业务范围
汽车零部件及配件制造, 汽车零部件研发；汽车零配件批发；技术服务、技术开发、技术咨询、技术交流、技术转让、技术推广；货物进出口。

Business Scope
Automotive parts and components manufacturing, automotive parts research and development; Wholesale automotive spare parts; technology services, technology development, technology advice, technology exchange, technology transfer, technology promotion; Import and export of goods.



采埃孚电子（珠海）有限公司
ZF Electronics (Zhuhai) Co., Ltd.

地址 / 邮编	广东省珠海市珠海大道东段北侧南屏科技工业园绿园路1号 / 519060
电话 / 传真	+86 756 8910 688 / +86 756 8910 699
形式	外商独资企业
成立日期	2005年4月7日
员工人数	约100
Address	No. 1 Lvyuan Road, Nanping S&T Industrial Park Zhuhai Avenue E, Zhuhai, Guangdong Province, P. R. China / 519060
Tel / Fax	+86 756 8910 688 / +86 756 8910 699
Legal Form	Wholly Foreign Owned Enterprise
Foundation Date	Apr. 7, 2005
Number of Employees	Approx. 100



业务范围
生产和销售汽车模块以及适用于汽车、家电和工业用途的开关、传感器等电子零部件。

Business Scope
Manufacture and sales of automotive modules, electronic components such as switches and sensors for automotive, household and industrial applications.

采埃孚电驱动科技（沈阳）有限公司
ZF Electric Mobility Technologies(Shenyang) Co.,Ltd.

地址 / 邮编	辽宁省沈阳经济技术开发区开发大路8甲 / 110141
电话 / 传真	+86 24 2534 8116 / +86 24 2537 0930
形式	外商独资企业
成立日期	2020年11月4日
员工人数	约280
Address	No. 8A, Kaifa Ave. Economic & Technological Development Zone, Shenyang, China. 110141
Tel / Fax	+86 24 2534 8116 / +86 24 2537 0930
Legal Form	Wholly Foreign Owned Enterprise
Foundation Date	Nov. 4, 2020
Number of Employees	Approx. 280

业务范围
汽车零部件及配件制造，电机及其控制系统研发，汽车零部件研发，电机制造，电子元器件与机电组件设备制造，技术服务与开发，新能源汽车电附件销售，机械零件、零部件销售，电力电子元器件销售，汽车零配件批发等。

Business Scope
Auto parts and accessories manufacturing, motor and control system research and development, auto parts research and development, motor manufacturing, electronic components and electromechanical component equipment manufacturing, technical service and development, new energy vehicle electrical accessories sales, mechanical parts and parts sales, sales of power electronic components, wholesale of auto parts.



采埃孚电驱动技术（杭州）有限公司

ZF Electrified Powertrain Technologies (Hangzhou) Co., Ltd.

地址 / 邮编	浙江省杭州市萧山经济技术开发区桥南区春晖路9号 / 311231
电话 / 传真	+86 571 2289 2000 / +86 571 2289 6673
形式	外商独资企业
成立日期	2005年9月9日
员工人数	约550
Address	#9 Chunhui Road, Xiaoshan Econoic & Technological Development Zone, Hangzhou, Zhejiang Province, P. R. China, 311231
Tel / Fax	+86 571 2289 2000 / +86 571 2289 6673
Legal Form	Wholly Foreign Owned Enterprise
Foundation Date	Sep. 9, 2005
Number of Employees	Approx. 550

业务范围
研发、生产、销售、服务乘用车车桥驱动、电驱动车辆驱动系统。

Business Scope
Engineering, production, sales, service, of axle drives of passenger cars and electric axle drive system of electric vehicles.



柳州采埃孚机械有限公司

Liuzhou ZF Machinery Co., Ltd.

地址 / 邮编	广西柳州市和平路143号 / 545007
电话 / 传真	+86 772 369 1588 / +86 772 369 1519
形式	合资企业
成立日期	1995年12月12日
员工人数	约200
外方	采埃孚(中国) 投资有限公司 51%
中方	广西柳工机械股份有限公司 49%
Address	No. 143 Heping Road, Liuzhou, Guangxi, P. R. China, 545007
Tel / Fax	+86 772 369 1588 / +86 772 369 1519
Legal Form	Joint Venture
Foundation Date	Dec. 12, 1995
Number of Employees	Approx. 200
Foreign Partner	ZF (China) Investment Co., Ltd. 51%
Local Partner	Guangxi Liugong Machinery Co., Ltd. 49%



业务范围
车辆、商用车辆、机械设备及船舶用变速箱、驱动桥及其零部件的生产、销售和售后服务，厂房机器设备租赁、咨询服务、服务外包业务；道路普通货物运输；润滑油销售。

Business Scope
Production, sales and after sales service of transmission, axles and their components and parts for Vehicles, Commercial Vehicles, Machinery and Marine Vehicles, lease of plant and facilities, consulting, service outsourcing and road transportation for ordinary cargo, sales of lubricant.

采埃孚（天津）风电有限公司
ZF Wind Power (Tianjin) Co., Ltd.

地址 / 邮编	天津市北辰科技园区高新大道78号 / 300402
电话 / 传真	+86 22 2820 7000
形式	外商独资企业
成立日期	2008年6月18日
员工人数	约490
Address	No. 78, Gaoxin Avenue, Beichen Hi-tech Industrial Park, Tianjin, P. R. China, 300402
Tel / Fax	+86 22 2820 7000
Legal Form	Wholly Foreign Owned Enterprise
Foundation Date	Jun. 18, 2008
Number of Employees	Approx. 490



业务范围
设计、研发、组装、制造、营销与出口用于风力发电的风轮机的变速箱及变速箱零部件以及提供售后、维修、咨询及其他配套和相关服务。

Business Scope
Design, research, assembly, manufacture, sales and export the gearbox and gearbox components which used for wind power turbine. Provide after sales service, maintenance, consulting and other related business.

采埃孚一拖（洛阳）车桥有限公司
ZF YTO (Luoyang) Axle Co., Ltd.

地址 / 邮编	河南省洛阳市西工区汉宫西路16号 / 471041
电话	+86 379 6292 5500
形式	合资企业
成立日期	2014年12月25日
员工人数	约200
外方	采埃孚（中国）投资有限公司 51%
中方	第一拖拉机股份有限公司 49%
Address	No. 16 Hangong Western Road, Luoyang, Henan Province, P. R. China, 471041
Tel / Fax	+86 379 6292 5500
Legal Form	Joint Venture
Foundation Date	Dec. 25, 2014
Number of Employees	Approx. 200
Foreign Partner	ZF (China) Investment Co., Ltd. 51%
Local Partner	First Tractor Company Limited 49%

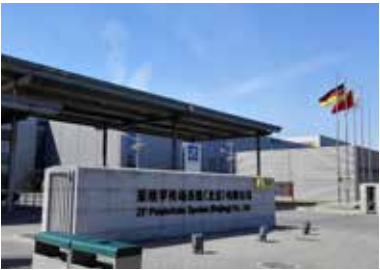


业务范围
农业机械车辆驱动桥的研发、应用工程、生产、装配及销售；从事货物及技术的进出口业务。

Business Scope
Product development, application engineering, manufacturing, assembly and sales of driven steer axle products for agricultural machinery vehicles. Export sales of related products, imports of equipment used in the production of the above products, molds, materials, parts, technology and patent.

采埃孚传动系统（北京）有限公司
ZF Powertrain System (Beijing) Co., Ltd.

地址 / 邮编 北京市经济技术开发区泰河一街2号
 / 100176
电话 / 传真 +86 10 8714 1423 / +86 10 8714 1498
形式 外商独资企业
成立日期 2015年3月16日
员工人数 约260



Address No. 2 Taihe Yi Jie, Economic-Technological Development Area, Beijing,
 P. R. China, 100176
Tel / Fax +86 10 8714 1423 / +86 10 8714 1498
Legal Form Wholly Foreign Owned Enterprise
Foundation Date Mar. 16, 2015
Number of Employees Approx. 260

业务范围
采埃孚传动系统（北京）有限公司是一家多元化的工业产业园区。园区内涵盖三大业务单元，包括风能技术、工业齿轮箱、非公路车辆传动系统、测试系统和高铁传动系统五条产品线：

- 风能技术业务单元从事零配件的加工制造，齿轮箱生产（装配，测试、喷漆）和售后服务等相关业务；
- 工业齿轮业务单元为工业齿轮箱生产及提供售后服务；
- 非公路车辆传动系统业务单元主要生产非公路齿轮箱及售后服务等相关业务；
- 测试系统业务单元主要生产用于轮胎测试的测试台和服务等业务；
- 高铁传动系统从事高铁齿轮箱的生产及售后服务等相关业务。

Business Scope
ZF Powertrain System (Beijing) Co., Ltd is a multi-business industrial park. With the rapid development of diversity, the company currently consists of 3 major business units IW (including IWI), IA (including IAT) and IB, totally 5 product lines.

- IW (Wind Power Technology) is doing parts manufacturing and gearboxes (assembly, testing, painting) and after sales service.
- IWI (Industrial Drives) provides gearboxes (assembly, testing, painting) and service for industrial gearboxes application.
- IA (Off-Highway Systems) produces gearboxes (assembly, testing, painting) and after sales service business.
- IAT (Test Systems) mainly produces test bench for tires and provides service business.
- IB (Special Driveline Technology) provides railway gearboxes (assembly, testing, painting) for high speed trains and metros together with after sales service.

采埃孚合力传动技术（合肥）有限公司
ZF-HELI Drivetechnik (Hefei) Co., Ltd.

地址 / 邮编 安徽省合肥市经济技术开发区青鸾路1418号 / 230601
电话 / 传真 +86 0551 65902702
形式 合资企业
成立日期 2018年7月
员工人数 约95
外方 采埃孚（中国）投资有限公司 51%
中方 安徽合力股份有限公司 49%

Address Qingluan Str. 1418, Economic & Technological Development Zone, Hefei,
 China, 230601
Tel / Fax +86 0551 65902702
Legal Form Joint Venture
Foundation Date Jul. 2018, 2018
Number of Employees Approx. 95
Foreign Partner ZF (China) Investment Co., Ltd. 51%
Local Partner JV with Anhui Heli Co., Ltd., 49%



业务范围
物料搬运设备驱动桥和变速箱及相关零部件的产品开发、研发、应用工程、制造、装配、测试、销售、售后服务、技术咨询、技术服务、技术培训等。

Business Scope
Mainly responsible for the production, development, manufacturing, assembly, testing and sales of material handling equipment drive axle and gearbox.

台湾采埃孚传动科技股份有限公司

ZF Taiwan Ltd.

地址 / 邮编	24158 新北市三重区中兴北街131-20号
电话 / 传真	+886 2 8511 2900 / +886 2 8512 2607
形式	外商独资企业
成立日期	2009年5月18日
员工人数	约20
Address	No. 131-20, Zhongxing N. St., Sanchong Dist., New Taipei City, 24158
Tel / Fax	+886 2 8511 2900 / +886 2 8512 2607
Legal Form	Wholly Foreign Owned Enterprise
Foundation Date	May. 18, 2009
Number of Employees	Approx. 20

业务范围
台湾采埃孚传动科技股份有限公司提供客户优质服务与产品，不论是在OE、售后服务市场或维修市场，且可应用于汽车、工具机与船舶产业，旗下品牌有ZF, SACHS, LEMFÖRDER, BOGE, TRW 和 WABCO。

Business Scope
ZF Taiwan Ltd is known for its competency, quality and service orientation for customers in the Original Equipment (OE), aftermarket and workshop business, serving the automotive, non-auto and marine industries. Under its charge are the product brands of ZF, SACHS, LEMFÖRDER, BOGE, TRW and WABCO.



瑞孚宏昌船舶推进系统股份有限公司

ZF Faster Propulsion System Co., Ltd.

地址 / 邮编	高雄市大寮区大有一街17号 / 83163
电话 / 传真	+886 7787 1831 / +886 7787 1833
形式	外商独资企业
成立日期	1988年5月17日
员工人数	约50
Address	No.17, Dayou 1 st Street, Daliao District, 83163 Kaohsiung City
Tel / Fax	+886 7 787 1831 / +886 7 787 1833
Legal Form	Wholly Foreign Owned Enterprise
Foundation Date	May. 17, 1988
Number of Employees	Approx. 50

业务范围
船用推进系统(如螺旋桨、轴系、轴架、联结器、舵板及其他配件)设计、制造及销售。

Business Scope
Design, manufacturing and sales of marine propulsion system, propeller, shafting system, bracket, coupling, rudder and accessories.



采埃孚亚太集团有限公司

上海市徐汇区苍梧路519号光启园四期2号楼 / 200233

电话: +86 21 6120 1166

传真: +86 21 6128 2135

电子邮件: zfchina@zf.com

www.zf.com

ZF Asia Pacific Group Co., Ltd.

Building 2, Phase IV, Guangqi Park, No.519 Cangwu Rd,
Xuhui District, Shanghai, 200233

Tel: +86 21 6120 1166

Fax: +86 21 6128 2135

E-Mail: zfchina@zf.com

www.zf.com



扫一扫, 关注采埃孚官微
Scan the QR code to follow
ZF China Official
Wechat account